

EN

Special offer  
International

# Plumbing program 2025



**BRINKO**<sup>®</sup>  
powered by **haupa**

## Water pump pliers

The BRINKO pipe wrench BRlpowerXL with slip joint for larger pipe diameters and large-edged screw connections fits in every tool case despite its large diameter.

The maximum lever arm greatly facilitates work thanks to the optimum force transmission. The setting is made using an INOX pushbutton directly on the workpiece, and is extremely easy compared to a pipe wrench. The BRlpowerXL has a hand-friendly handle setting with finger clamp protection.

- Chrome-Vanadium-Steel, chrome-plated
- Grip surfaces are hardened inductively
- INOX pushbutton and spring
- Self-clamping to tubes and nuts
- With finger clamp protection
- Anti-slip handles, soft dip-insulated, yellow
- With pushbutton single-and adjustment
- 27-level fine adjustment



Art. no.	Length mm	Width mm	Height mm	Weight kg
687/150	150	30	32	1 1/4
687/180	180	36	40	1 1/2
687/250	250	46	50	2
687/300	300	60	70	2 3/4

**Art. no. 687/150**

Ø 1 ¼ Inch



**Art. no. 687/180**

Ø 1 ½ Inch



**Art. no. 687/250**

Ø 2 Inch



**Art. no. 687/300**

Ø 2 ¾ Inch



## Water pump pliers BRlpowerXL

**Art. no. 687/400**

Ø 3 ½ Inch



**brinko.de**

HAUPA GmbH, Lange Str. 40, D-42857 Remscheid, Germany  
Phone: +49 (0)2191 8418-0, Fax: +49 (0)2191 8418-840, E-mail: sales@haupa.com  
Prices upon request. Sales are conducted exclusively through specialized wholesalers.  
Technical changes and printing errors reserved.



## Water pump pliers

- Chrome vanadium steel
- heavy-duty design
- high quality hardened and tempered
- Induction hardened gripping teeth
- with box joint
- Finger pinch protection
- jaws and joint bright ground
- Hammer finish, yellow lacquered



Art. Nr.	↔ mm	↕ mm	↕ mm	↕ "
685/175	175	32	33	1 2/7
685/240	240	39	40	1 4/7
685/300	300	52	53	2

**Art. Nr. 685/175**

Ø 1 2/7 Zoll

**Art. Nr. 685/240**

Ø 1 4/7 Zoll

**Art. Nr. 685/300**

Ø 2 Zoll



## Water pump pliers | automatic

- Chrome vanadium steel
- nose brightly polished
- soft dip insulated anti-slip handles, yellow
- automatic jaw width adjustment by simply slipping handles together, without snap adjustment
- with finger pinch protection
- patented technology



Art. no.	Length	mm	mm	"
682/250	250	42	46	1 1/2

**Art. no. 682/250**

Ø 1 1/2 Inch

## Fittings pliers | Key pliers

- Chrome vanadium steel, matt chrome-plated (no rusting)
- with push-button one-hand adjustment
- with finger pinch protection, one parallel gripping and one movable jaw
- Smooth, polished gripping surfaces, induction hardened
- Non-slip handles, soft, double dip-insulated, yellow
- reduced weight
- 10-fold hand force
- replaces open-end spanner set



- 10 times hand force
- replaces open-end wrench set

Art. no.	Length	mm	"
689/180	180	36	1 7/16
689/240	240	50	2
689/300	300	68	2 1/2

**Art. no. 689/180**

Ø 1 7/16 Inch

**Art. no. 689/240**

Ø 2 Inch

**Art. no. 689/300**




Ø 1 7/16 Inch





## Corner pipe pliers

- Chrome vanadium steel, forged
- special hardened teeth
- S-opening, polished
- finger pinch protection

Art. no.		 mm	 "
619/1	320	0 - 49	1
619/11/2	440	0 - 68	1 1/2
619/2	560	0 - 85	2



**Art. no. 619/1**

Ø 1 Inch

**Art. no. 619/11/2**

Ø 1 ½ Inch

**Art. no. 619/2**

Ø 2 Inch

## Pipe pliers set

### Consisting of:

1 corner pipe pliers 1"  
Art. no. 619/1

1 corner pipe pliers 1 1/2"  
Art. no. 619/11/2

1 water pump pliers 240 mm  
Art. no. 685/240

- corner pipe pliers with S-opening and finger pinch protection
- special hardened teeth



**Art. no. 9001**

3 pieces



## Ratchet wrenches 4 in 1

### 4 in 1

The ratchet wrench handles 4 different nut sizes

- Sizes: 10 x 13 mm and 17 x 19 mm
- finely toothed 72 teeth of the 2 ratchets – ratchets can be switched to clockwise/counterclockwise operation
- due to 12-slided toothing, the wrench easily grips 4, 6 and 12-sided screws as well as almost round nuts
- Chrome-vanadium steel, chrome-plated
- extremely robust

Art. no. 83

Length 200 mm

# 4in1



## Hanger bolt driver



Multidirectional hanger bolt driver

- Screw-in and screw-out tool hanger bolt driver Ø 8 mm and Ø 10 mm
- self-clamping when turned
- for fast and effortless screwing and unscrewing of stay bolts, express and hanger bolts without damaging the thread
- with hexagonal driver for power tools

Art. no. 102/8

Ø 8 mm

Art. no. 102/10

Ø 10 mm





## Step wrench set

1/2"

Art. no. 674

Length 105 mm

- 1 reversible ratchet Art. no. 672/265
- 1 step wrench, 105 mm Art. no. 673/105 with 9 levels 8.0, 9.5, 9.8, 11.8, 12.8, 13.8, 16.8 21.5, 22.0
- supplied in DIY pouch



## Combination angle valve key

1/2"

Art. no. 659-1

1/2" Ratchet

### The right tool, especially in tight spaces.

For damage-free installation of combination angle valves, which, in addition to connecting a mixer tap, also have an outlet for items like a dishwasher or washing machine.

1/2" ratchets Art. 129-3/250 are used for the drive.





## Sleeve extractor set

Art. no. 1088

5 pieces

### For the extraction of threaded pipe connections, sleeves and nipples

- Left-hand extractor
- CrV-steel, hardened
- Surface burnished
- Polished cutting surface

The service life of the extractors varies depending on the hardness of the counter material.

Knock the extractor into the drill hole and loosen the screw.

### Content:

- 1 sleeve extractor 3/8"
- 1 sleeve extractor 1/2" - 3/4"
- 1 hexagonal insert 1/2", size 26
- 1 hexagonal insert 1/2", size 19
- 1 reversible ratchet, inner and outer square drive bit, 1/2" drive





## Handwheel socket BRlwheelNut

1/2"

Art. no. 129-50

1/2" Ratchet

**Special tool with bars that can engage in the openings of handwheels and is driven by a 1/2" ratchet!**  
**Now even the most stubborn blockages can be removed with ease!**

### **A problem that every craftsman in the plumbing and heating industry knows!**

In the field of domestic water or heating supply, a component must be replaced. In order to facilitate this, shut-off devices such as valves or slide valves were installed in front of replaceable components during construction.

Now such a component as a water meter or a pump has to be replaced.

The valves or gates in front of and behind these components have not been moved for a long time and are therefore so tight that the force of the hand is not sufficient to move the valve or gate, let alone shut off the pipe tightly.

In order to achieve this, pliers, levers and obscure constructions are used. In most cases, this approach leads to the breakage of the cast iron handwheel, to bending or even to the tearing off of the spindle, since the rotational force is applied laterally.

The company BRINKO has addressed this nuisance and developed the handwheel socket BRlwheelNut.

The special tool, which is protected with a design pattern, consists of a basic body with protruding webs that engage in the openings of almost all handwheels and that can be driven with a 1/2" ratchet. Due to the force applied centrally from above and the distribution of the pressure points over several surfaces, a non-destructive actuation of valves and slides is made possible.

The time saved and the avoided hassle of removing a destroyed valve with complete shut-off of the water supply or running a heating system empty with subsequent venting of all radiators makes the BRlwheelNut an indispensable and cost-saving helper.





## Socket wrench set BRImultiLock | 86 pieces

1/2" 1/4"

Art. no. 127-1

86 pieces

### Troubleshooter!

**BRINKO BRImultiLock for damaged hexagon head screws and many other profiles**

- Reversible ratchet with inner and outer hexagon
- twelve-tooth profile, 1/2" and 1/4" drive

Material: Cr-V 50BV30 steel | Industrial quality | Standards: DIN 3124; ISO 2725 | Finishing: Silver mat finished | Profile: BRImultiLock - Best solution for variety bolts | Torsion: 30-50% (depends on size) higher than DIN | Life-Time: 200k circle times at 35% of DIN | square drive

### Content:

- Plumber Ratchets 1/4", 1/2"
- Universal joint 1/4", 1/2"
- Spinner Handle incl. adapter 1/4", 150 mm
- Sliding T Bar 1/4", 150 mm
- Extension Bar 1/4", 50 - 100 mm
- Extension Bar 1/2", 125 - 250 mm
- Plug Sockets 1/2", 16 - 21 mm
- Bit Adapter 1/2" - 5/16"
- BRImultiLock Socket 1/2" SW 10 - 12 - 13 - 15 - 16 - 17 - 18 - 19 - 20 - 21 - 22 - 24 - 27 - 30 - 32 mm
- Deep Socket 1/2" SW 14 - 15 - 17 - 19 mm
- BRImultiLock Socket 1/4" SW 4 - 4.5 - 5 - 5.5 - 6 - 7 - 8 - 9 - 10 - 11 - 12 - 13 - 14 mm
- Deep Socket 1/4" SW 6 - 7 - 8 - 9 - 10 - 11 - 12 - 13 mm
- Bits, slot 1/4" 4 - 5.5 - 6.5 mm
- Bits, cross slot 1/4" PH 1, 2 | PZ 1, 2
- Bits, allen key 1/4" 3 - 4 - 5 - 6 mm
- Bits, Tx 1/4" Tx 8 - 10 - 15 - 20 - 25 - 30
- Bits, cross slot 1/4" PH 1, 2 | PZ 1, 2
- Bits, allen key 1/4" 3 - 4 - 5 - 6 mm
- Bits, Tx 1/4" Tx 8 - 10 - 15 - 20 - 25 - 30
- Bit Adapter 1/4 - 5/16"
- Bits, slot 5/16" 8 - 10 - 12 mm
- Bits, cross slot 5/16" PH 3, 4 | PZ 3, 4
- Bits, allen key 5/16" 8 - 10 - 12 - 14 mm
- Bits, Tx 5/16" Tx 40 - 45 - 50 - 55



**Troubleshooter!**  
BRINKO BRImultiLock for damaged hexagon head screws and many other profiles



brinko.de

HAUPA GmbH, Lange Str. 40, D-42857 Remscheid, Germany  
Phone: +49 (0)2191 8418-0, Fax: +49 (0)2191 8418-840, E-mail: sales@haupa.com  
Prices upon request. Sales are conducted exclusively through specialized wholesalers.  
Technical changes and printing errors reserved.



## Socket wrench set BRImultiLock | 57 pieces

1/4"

Art. no. 122

57 pieces

### Troubleshooter!

**BRINKO BRImultiLock for damaged hexagon head screws and many other profiles**

- Reversible ratchet with inner and outer hexagon
- twelve-tooth profile, 1/4" drive

Material: Cr-V 50BV30 steel | Industrial quality | Standards: DIN 3124; ISO 2725 | Finishing: Silver mat finished | Profile: BRImultiLock - Best solution for variety bolts | Torsion: 30-50% (depends on size) higher than DIN | Life-Time: 200k circle times at 35% of DIN | square drive

### Content:

- Plumber Ratchets 1/4"
- Universal joint 1/4"
- Sliding T Bar 1/4"
- Spinner Handle incl. adapter 1/4", 150 mm
- Hex keys 1,5 - 2,0 - 2,5
- Extension Bar 1/4", 50 - 100 mm
- BRImultiLock Socket 1/4" SW 4 - 4.5 - 5 - 5.5 - 6 - 7 - 8 - 9 - 10 - 11 - 12 - 13 - 14 mm
- Deep Socket 1/4" SW 6 - 7 - 8 - 9 - 10 - 11 - 12 - 13 mm
- Socket Tx-E 1/4" E 4 - 5 - 6 - 7 - 8
- Bits, cross slot 1/4" PH 1, 2, 3 | PZ 1, 2, 3
- Bits, slot 1/4" 4 - 5.5 - 7 mm
- Bits, allen key 1/4" 3 - 4 - 5 - 6 - 7 mm
- Bits, Tx 1/4" Tx 8 - 10 - 15 - 20 - 25 - 27 - 30 - 40



**Troubleshooter!**  
**BRINKO BRImultiLock for damaged hexagon head screws and many other profiles**





## Screwdriver set



- 6 pieces:
  - 4 slot-head screwdrivers
  - 80 x 3, 100 x 4, 125 x 5.5, 150 x 6.5 mm
  - 2 Pozidriv screwdrivers PZ 1, PZ 2
- chrome vanadium steel
- matt chrome-plated blades
- 2-component handle with a hole



ROLL REPRESSIVE

Art. no. 2122

Slot-head / Pozidriv



## Screwdriver set 1000 V



- 7 pieces, 1000 V:
  - 4 slot-head screwdrivers 1000 V
  - 75 x 2.5, 100 x 4, 125 x 5.5, 150 x 6.5 mm
  - 2 cross-head screwdrivers 1000 V PZ 1, PZ 2
  - 1 safety voltage tester 150 - 250 Volt (GS-certified)
- chrome vanadium steel
- matt chrome-plated blades with protective insulation
- 2-component hand with a hole
- individually tested to IEC 60900

1000 V IEC 60900



ROLL REPRESSIVE

Art. no. 2126/7

Slot-head / Pozidriv





## Screwdriver set with striking cap



Art. no. 2128

Slot-head / Phillips

- 2C power screwdriver with full-length blade and impact cap
- Hexagonal shank for spanner socket
- 6-piece set:
  - 4 flat-blade screwdrivers made from CV steel
  - 75 x 3.5 mm AF 8 | 90 x 4.5 mm AF 8 | 100 x 5.5 mm AF 8 | 125 x 6.5 mm AF 10
- 2 screwdrivers Phillips head made of MoV steel
- PH1 SW 8 - PH2 SW 10
- also for light chiselling work



ROLL REPRESSIVE



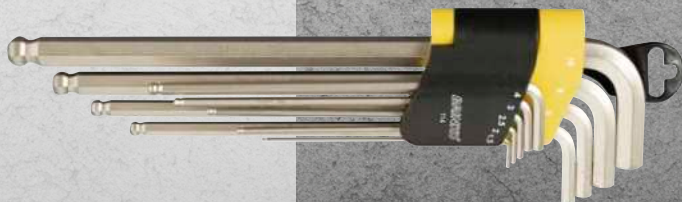
## Hexagon spanner set Hex



Art. no. 114

9 pieces, size: 1,5 - 10 mm

- 9 pieces: 1,5, 2, 2,5, 3, 4, 5, 6, 8, 10 mm
- Chrome vanadium steel, bright nickel-plated
- long design
- hex/ball-end combined
- the ball-end allows you to screw up to a 30° angle
- unfolding plastic holder allows free access
- with belt clip





## Claw-type gripper magnetic

Art. no. 1830

Length: 600 mm

### Everything is under control!

- flexible claw-type gripper, length 60 cm
- ideal for gripping screws, nuts etc. that are difficult to reach
- the claw, with 'spring-action-system', can be opened up to 23 mm
- the additional magnet lifts metal parts up to 400 g
- the integrated LED allows to find dropped small-parts even in dark corners



## Bit set | 32 pieces | colour-coded

1/4"

Art. no. 2145

32 pieces

- Supplied in a plastic box with a belt clip
- S2 steel, chrome-plated with colour-coding
- 32 pieces:
  - 1 bit holder with quick release
  - 1 adaptor for 1/4"
  - 30 bits

Content	Colour	Sizes	Pieces
cross slot Philips	Red	PH Gr. 1, 2, 2, 3	4
cross slot Philips	Green	PZ Gr. 1, 2, 2, 3	4
slot	Blue	3, 4, 5, 6 mm	4
allen key	Yellow	3, 4, 5, 6 mm	4
Tx	Orange	Tx 10, 15, 20, 25, 27, 30, 40	7
Security Tx	Purple	STx 10, 15, 20, 25, 27, 30, 40	7



brinko.de

HAUPA GmbH, Lange Str. 40, D-42857 Remscheid, Germany  
 Phone: +49 (0)2191 8418-0, Fax: +49 (0)2191 8418-840, E-mail: sales@haupa.com  
 Prices upon request. Sales are conducted exclusively through specialized wholesalers.  
 Technical changes and printing errors reserved.



## Assembly Connection Gauge

- Supplied in an impact-resistant plastic case
- dimensional and spatial alignment of all common installation inside dimensions 1/2" in bare brickwork
- easily readable circular bubble and with depth adjustment
- fixed adjustment increments: 75, 100, 120, 153, 200, 240 mm
- also fits for assembly rails 150 mm
- for bathtubs and shower mixers, corner and flush-mounted valves, pipe ventilators

Art. no. 2845

1/2" thread



## Valve extension cutter with chip collection

- for trimming 1/2" valve extensions made of red brass
- with SDS chuck adaptor
- rubber cap collects the milled chips

Art. no. 705/1/2

1/2" thread







**brinko.de**

HAUPA GmbH, Lange Str. 40, D-42857 Remscheid, Germany  
Phone: +49 (0)2191 8418-0, Fax: +49 (0)2191 8418-840, E-mail: sales@haupa.com  
Prices upon request. Sales are conducted exclusively through specialized wholesalers.  
Technical changes and printing errors reserved.



## PREMIUM bathroom installation set | 17 pieces

1/2"

Art. no. 677-2

17 pieces

NEW

### 17-piece, contents:

- Combination corner valve spanner
- Double hole punch 32mm + 35mm
- Duo valve holder
- Tap extension cutter with chip catcher
- Combination tap spanner 13 mm with 4 inserts 9, 10, 11, 12 mm and 1 claw
- WC seat & sanitary installation spanner BRImultiKey 19 in 1
- S-connection installation tool
- Stick screwdriver Ø 10 mm
- Reversible ratchet, 1/2" drive, with internal and external square drive
- Deep hole marker, 2 in 1, black, with sharpener
- Plumbing installation spanner
- Step spanner for radiators and water, 6 steps



## Combination washbasin tap wrench

Art. no. 655

6 pieces

- Suitable for all fittings up to 13 mm threaded rod and SW 32 mm
- 4 inserts 9, 10, 11, 12 and shank 13 mm
- reversible claw with spring
- Knurled handle
- Size 8 and 14 mm on request Art. No. 655-1/8 and 655-1/14

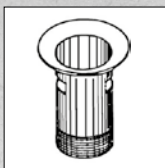




## Valve holder

1/2"

- to lock eccentric and standard valves in place
- with a flexible T-handle
- length 120 mm



Art. no. 725

Length 120 mm



## Duo valve holder

1/2"

Chrome-plated drain fittings installed in sinks tend to get scratched during installation, leading to customer frustration.

To prevent this, there's the Automatic Duo Valve Holder. The Duo valve holder is inserted from the top into the drain valve and locks into place. Now, holding it during installation is no longer a problem, and there's no risk of slipping that could damage the chrome plating.

- For drain fittings in sizes 1" and 1 1/4"
- For use with a 1/2" drive."



Art. no. 726

Length 134 mm



## Toilet seat & sanitary installation wrench BRImultiKey 19 in 1

Art. no. 662

17 mm | ½ Inch

The BRINKO Toilet seat & sanitary installation wrench 'BRImultiKey' 19 in 1 is a multi-talent for the different screw connections on toilet seats, and adapters on water taps and fittings (Perlators/aerators).

You practically do not need any other tools because this universal wrench combines almost everything in one tool.

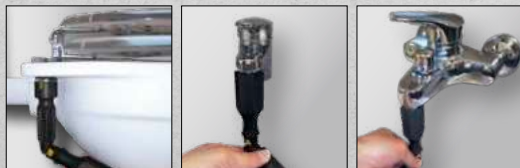
- Up to 19 adapter options
- Application with larger torques on very tight or rusted nuts, wing nuts, perlators or aerators
- Attractive form, comfortable and pleasant handles
- Reversible inserts (red) as a 'click system' for various sanitary attachments
- Adapter options for 17 mm open-end wrench
- Inner adapter for wrench handle for a 1/2 inch ratchet wrench extension
- Universal wrench made of very durable and tough plastic PA6 (polyamide) and 30 % glass-fibres

### WITHOUT an adapter:

Up to 11 different wing nuts of the toilet seat can be opened or screwed on.

### WITH adapter:

Open and/or screw on 10 mm nuts (M6 threaded rods) or 13 mm nuts (M8 threaded rods).





## Carbon steel, stainless steel pipe cutter

Art. no. 633-71/35

Pipe Ø 3 – 35 mm

**Special pipe cutter for INOX, C-steel and Cu pipes**  
**For pipes with Ø 3 35 mm or 1", up to 3 mm wall thickness**

### Body

- magnesium die casting
- especially light 1/3 lighter than aluminum | almost 1/2 lighter than zinc diecast | 200 g lighter than 633-70/35 yet as strong as zinc die-cast
- best strength/weight ratio of any metal
- easily 100 % recyclable
- modern material, increasingly also used in automotive engineering
- powdercoated (not smoothly painted), thus better feel/grip for dirty (oily, greasy)/sweaty hands

### Guide rollers

- **needle bearing** | 2 needle bearings per roller stainless steel rollers
- no more recess for cutting close to the flange, thus optimal guiding of the Inox tube

### Fast running spindle

- extra strong
- zinc die casting
- high dimensional accuracy
- high surface quality (low roughness)
- easy to machine: high accuracy

### Integrated rotary deburrer

- Noga deburrer (one of the best blade manufacturers in the world)
- removable, easier deburring without moving the whole RAS

### Spare cutting wheel

- Art. No. 633-75A
- size: 19 x 5 mm
- **Additional spare wheel in the handle!**
- change without additional tool

### Handle

- zinc die casting

### Cutting wheel

- needle bearing
- less resistance when turning
- clean cut





### Cutting wheel | Stainless steel, carbon steel, copper

- replacement cutting wheel **with needle bearing**
- suitable for stainless steel, carbon steel, copper
- suitable for: Art. no. 633-71/35
- Outer Ø 19 mm
- Inner Ø 5 mm
- Thickness 5 mm

**Art. no. 633-75A**

Pipe Ø 8 – 28 mm



### Ratchet cut | stainless steel, carbon steel

#### **Problem-solver for pipes that are already installed**

- specially for cutting stainless steel, carbon steel and copper pipe, Ø 8 – 28 mm
- the fine ratchet functions makes it easy to cut the pipes
- easy to adjust the spindle
- replacement cutting wheel Art. no. 622-1

**Art. no. 622/28**

Pipe Ø 8 – 28 mm



### Cutting wheel | Stainless steel, carbon steel, copper

- replacement cutting wheel suitable for stainless steel and carbon steel
- suitable for: Art. no. 622/28
- Outer Ø 19 mm
- Inner Ø 6 mm
- Thickness 3 mm

**Art. no. 622-1**

Pipe Ø 8 – 28 mm





## Pipe cutter with deburrer for stainless steel, copper and brass pipes, plastic and composite pipes

### With extra strong fast running spindle

- 4-roller guide with groove for beading
- integrated rotation deburrer
- 1 cutting wheel for stainless steel, copper and brass pipes, Art. no. 632-1
- 1 cutting wheel for plastic and composite pipes, Art. no. 633-1 (only integrated in the handle of Art. no. 633/35)

**Art. no. 633/35**

Pipe Ø 3 – 32 mm

**Art. no. 633/45**

Pipe Ø 9 – 45 mm



## Combination pipe cutter with deburrer

**For pipes Ø 6 – 76 mm, 1/4 – 3"**

**for copper and brass pipes, plastic - two cutting wheels**

- rapid spindle adjustment
- 1 cutting wheel for plastic and composite pipe, Art. no. 627-1
- 1 cutting wheel for stainless steel, copper, brass and hard plastic pipe (up to 2 mm), Art. no. 627-2

**Art. no. 627**

Pipe Ø 6 – 76 mm



**brinko.de**

HAUPA GmbH, Lange Str. 40, D-42857 Remscheid, Germany  
 Phone: +49 (0)2191 8418-0, Fax: +49 (0)2191 8418-840, E-mail: sales@haupa.com  
 Prices upon request. Sales are conducted exclusively through specialized wholesalers.  
 Technical changes and printing errors reserved.



## INOX pipe cutter Plus with deburring unit

### Special pipe cutter for INOX pipes Ø 6 – 76 mm, 1/4 – 3"

- fast feeder system

### Integrated rotation deburring unit

- Noga deburring unit (one of the world's best manufacturers of blades)
- detachable, easy deburring without having to move the entire RAS

### Guide rolls

- 4 guide rolls made of INOX steel for optimum hold of the pipe
- guide rolls with needle bearings | 2 needle bearings per roll - stainless steel rolls
- no more prior puncturing for cuts close to the seam, this allows optimum guidance of the Inox pipe

### Cutting wheel

- fast exchange of cutting wheels without tools
- cutting wheel with needle bearings for INOX, Art. No. 627-71
- size: 19 x 6,2 mm
- extra spare wheel in the handle !!!



Art. no. 627-70

Pipe Ø 6 – 76 mm

## Cutting wheel | Stainless steel

- replacement cutting wheel suitable for stainless steel
- suitable for: Art. no. 627-70
- Outer Ø 19 mm
- Inner Ø 5 mm
- Thickness 5 mm

Art. no. 627-71

Pipe Ø 6 – 76 mm





## Plastic pipe scissors

Art. no. 634/35

Ø 6 – 35 mm

For one-hand operation with automatic blade retraction

- for Ø 6 – 35 mm
- for separating hard and soft plastic pipes, cable ducts, fibre-reinforced plastic and rubber hoses, pipes made of composite material and polypropylene
- little strength required due to ratchet technology
- straight and distortion-free, right angles cuts
- no problem blade change



## Pipe deburrer

Art. no. 648/35

Pipe Ø 8 – 35 mm

Art. no. 648/54

Pipe Ø 10 – 54 mm

- for internal and external deburring of stainless steel, brass, aluminium and plastic pipes
- robust quality tool: stiff aluminium housing and very fine deburrer blade



brinko.de

HAUPA GmbH, Lange Str. 40, D-42857 Remscheid, Germany  
Phone: +49 (0)2191 8418-0, Fax: +49 (0)2191 8418-840, E-mail: sales@haupa.com  
Prices upon request. Sales are conducted exclusively through specialized wholesalers.  
Technical changes and printing errors reserved.



## Automatic plastic tube shears

- with lever transmission
- for tubes in PVC, PE, PD, PEX, PVDF with a wall thickness of up to 2 mm and composite tubes
- single-hand operation and recoil-free ratchet mechanism, high safety standard
- durable blade made of tempered steel with a precise angle for easy cutting of plastic tubes, with V-cut
- little power required thanks to special teeth design
- precise pinpoint cut without deformation of the tubes, wide tube base
- rubber-coated handle and powder-coating for a secure hold without slipping
- transport lock and latch
- blade with fast retraction
- easy blade exchange

Art. no. 635/35

Pipe Ø 35 mm

Art. no. 635/42

Pipe Ø 42 mm





## HD-Hand Inspection Camera BRlcamS

Art. no. 3780

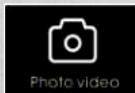
5-Inch-LCD-HD

- 5 inch LCD HD high resolution screen for real time display
- High-quality CMOS sensor (camera) with a resolution of 1280 x 720 pixels (camera head Ø 8 mm)
- HD resolution screen with 1920 x 1080 and 1280 x 720 options
- Photo and video recording to Micro SD-card
- Triple LED brightness adjustment of camera light and screen illumination
- 1 meter swan-neck camera with IP67 waterproofing
- 4000 mAh, 3.7 volt lithium-ion battery provides up to 5 hours of standby time
- Supports seven languages: English, French, German, Spanish, Italian, Japanese, Chinese



### Content:

- Screen Unit
- 1 Meter Swan-Neck Camera with Ø 8 mm Camera Head
- User Guide
- Threading-Attachable Hook
- Threading-Attachable Magnet
- Threading-Attachable 90° Mirror
- Charging cable USB-C to USB-A USB-A charger





## Pipe inspection camera system BRlcamL

Video inspection system for visual inspection of pipes, hollow bodies and spaces as well as finding blockages or damage!

**Pipe inspection camera system BRlcamL with a swivelling camera head, only 28 mm diameter and 40 m fiberglass cable, intelligent compact design combined with simple operation and easy transportation, thanks to the aluminium frame.**

This waterproof system is complete with transmitter module can be used between and can be detected, tracked and located by locating devices, operating at 512 Hz. The camera head of the BRlcamL can be rotated 360° and swiveled by 210° and enables an exact Driving through connections and checking pipe branches.

The display unit is surrounded by a robust, waterproof and airtight plastic case and can be used in cramped working conditions or for better transport of the separated push cable unit.

On the 10" TFT monitor with a Resolution of 800 x 600 pixels the smallest Defects will be recognized and the number of meters inserted are shown. The BRlcamL is equipped with a multifunctional Control panel with

QWERTY keyboard for entering text, as also an integrated microphone for voice recording during video recording on SD card or USB stick. This intelligent system even has a device for cleaning the fibre cable after use by pushing it back, which removes adhering water and impurities. These are collected in the waterproof body, which can then be emptied outdoors.

By unscrewing the transmitter unit and inserting an optional adapter, bends from DN50 upwards are possible. This system can also be operated with a 10 or 20 meter long hand reel with a Ø 12 mm camera head.

### Content:

- 360°/210° rotating/swivelling camera head Ø 28 mm
- Camera cable: Ø 7mm/40 metres long
- Steel coil, Meter counter
- 6-pin camera connection
- Cleaning brush
- 512 Hz sender
- IP68 Multifunctional control device in the IP66 case, 10" TFT monitor with USB/SD recording
- Text and voice input using the QWERTZ keyboard
- Control buttons for swivelling camera head
- Operated with 6600 mAh Li-Ion battery or current
- Mains adapter, Guide ball and star for camera head
- Video cable 1 metres 6-pin, Remote operation

Art. no. 3741

DN70 – DN160



VIDEO | 3741



Ø  
28 mm

Ø 7 mm  
40 m

DN50  
DN160

360°  
210°

10"  
TFT

800 x  
600 Px

Akku  
Li-Ion  
6600 mAh

IP68

**BRINKO®**  
powered by **haupa**



## Brazing set – HLS

Art. no. 3851

9 pieces

NEW

### Portable brazing device for propane/oxygen for hard and soft soldering

A small and thus easily transportable brazing device is also listed in the certification list. Equipped with a 2-litre oxygen and 425 g propane cylinder, check valves for propane and oxygen (required by accident prevention regulations), pressure regulator, 3 m double hose, and adjustable handle with burner. This brazing device offers everything needed for brazing and annealing copper pipes (if already available, use the refrigeration-climate sets without brazing equipment). Performance up to 2850 °C

#### Set of 9, comprising:

- Propane cylinder
- Oxygen cylinder
- Propane-oxygen hose
- Support frame
- Handle
- Insert, size 2 – 4
- Oxygen pressure regulator valve
- Liquefied gas medium pressure regulator
- Check valve





## Hydraulic pipe bending set | Combined

Art. no. 637-10

15 pieces

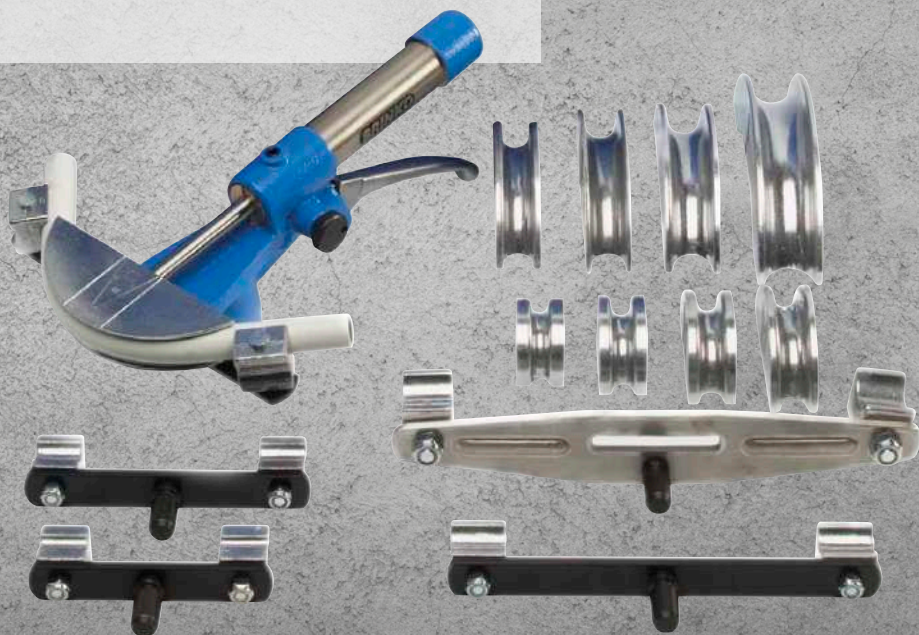
### Supplied in a strong plastic case:

1 hydraulic hand pipe bending tool

9 bending segments, aluminium pressure die-casting, 10, 12, 15, 16, 18, 20, 22, 26, 32 mm

5 dollies

- for soft copper pipes, sheathed copper and soft steel pipes Ø 10 – 22 mm
- for stainless steel pipes Ø 10 – 15 mm
- for composite pipes Ø 12 – 32 mm
- bends up to 90°
- bending radius 4 x diameter
- to refill the oil, please use "Shell Morlina S2 BL 10" (formerly "Shell Tellus C 10")





## Hydraulic pipe bending set imperial\* – HRB-Z

Art. no. 637-30

11 pieces

NEW

The hydraulic pipe bending set imperial enables easy and smooth bending of soft, semi-hard, and coated copper and mild steel pipes with imperial outer dimensions. This avoids soldering-press connections and potential leaks. A standard bending radius is maintained with this hydraulic tube bending set.

- For soft, semi-hard, and coated copper and mild steel pipes  $\varnothing$  1/4" – 7/8"
- For stainless steel pipes  $\varnothing$  1/4" – 1/2"
- For composite pipes  $\varnothing$  1/4" – 7/8"
- Bends up to 90°; bending radius 4x diameter

### Set of 11, comprising:

- Hydraulic manual pipe bending device
- Bending segments, aluminium die-casting, 1/4" 5/16" 3/8" 1/2" 5/8" 3/4" 7/8", 3 counter-holder





## Hydraulic pipe bending set metric\* - HRB-M

Art. no. 637-40

9 pieces

NEW

The hydraulic pipe bending set metric enables easy and smooth bending of soft, semi-hard, and coated copper and mild steel pipes with metric outer dimensions. This avoids soldering-press connections and potential leaks. A standard bending radius is maintained with this hydraulic tube bending set.

- For soft, semi-hard, and coated copper and mild steel pipes Ø 10 - 22 mm
- For stainless steel pipes Ø 10 - 15 mm
- For composite pipes Ø 12 - 22 mm
- Bends up to 90°; bending radius 4x diameter

### Set of 9, comprising

- Hydraulic manual pipe bending device
- Bending segments, aluminium die-casting, 10, 12, 15, 18, 22 mm, 3 counter-holder





## Expander set imperial\* - EXP-Z

Art. no. 720-30

9 pieces

NEW

With the imperial expander set, copper pipes with inch dimensions can be correctly expanded to insert a copper pipe of the same diameter and connect it with brazing.

**Expander tool for refrigeration technology only!**

**Set of 9, comprising:**

- Expander 1/4", 3/8", 1/2", 5/8", 3/4", 7/8", 1", 1-1/8"
- Manual pipe expander with copper pipes



## Expander set metric\* - EXP-M

Art. no. 720-40

9 pieces

NEW

With the metric expander set, copper pipes with metric dimensions can be correctly expanded to insert a copper pipe of the same diameter and connect it with brazing.

**Expander tool for refrigeration technology only!**

**Set of 9, comprising:**

- Expander 6 - 10 - 12 - 16 - 19 - 22 - 25 - 28 mm
- Manual pipe expander with copper pipes





## Pressure testing pump

- for safe tightness testing on water pipes
- brass piston, 1/2" hose connection
- test pressure up to 60 bar
- storage tank 12 l, painted red
- tank dimensions 500 x 180 x 140 mm
- replacement manometer Art. no. 7640-1
- replacement pressure hose Art. no. 7640-2

Art. no. 7640

60 bar

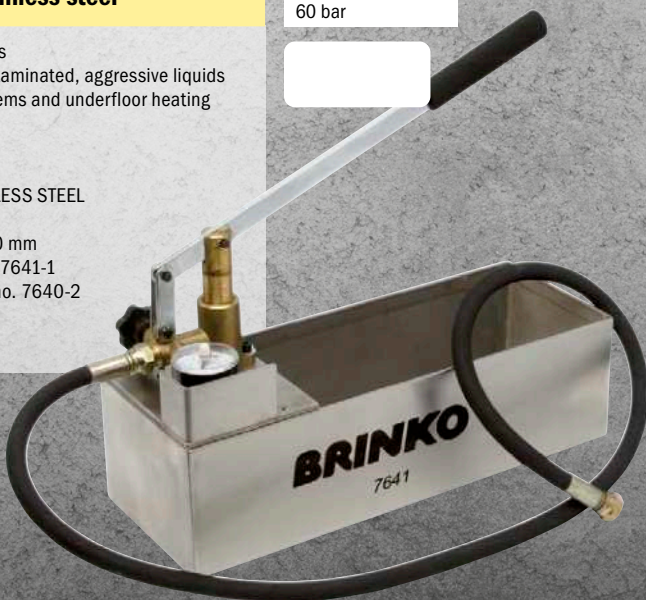


## Pressure testing pump stainless steel

- for safe tightness testing on pipes
- in particular with chemically contaminated, aggressive liquids
- also suitable for solar panel systems and underfloor heating systems
- 1/2" hose connection
- test pressure up to 60 bar
- storage tank 12 l made of STAINLESS STEEL
- per stroke 0.027 litres
- tank dimensions 500 x 190 x 140 mm
- replacement manometer Art. no. 7641-1
- replacement pressure hose Art. no. 7640-2

Art. no. 7641

60 bar





## Pipe cleaning pump

- Suction and pressure cleaner for blocked pipes
- short attachment for washbasins and sinks
- long attachment for WC

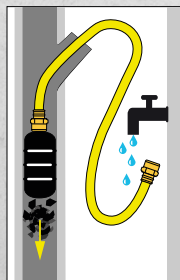


**Art. no. 3722**

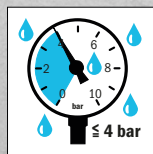
Length 55 cm

## Water pressure drain cleaner

- Ingeniously removes blockages in drainpipes with high pressure water
- for pipes Ø 40 - 150 mm
- including 1.5 m hose with adaptor, hose connection 1/2" x 3/4" IG
- patented pressure balloon



Ø 16 mm | 1/2"



Ø 40 - 150 mm



Ø 35/76 mm



**Art. no. 3730/1**

Pipe Ø 40 - 80 mm

**Art. no. 3730/2**

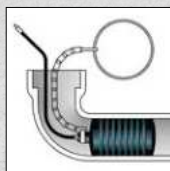
Pipe Ø 80 - 150 mm





## Sealing balloon

- easily seal pipes
- pneumatic sealing system for various pipe diameters
- insert, inflate, work
- suitable for compressed air hose Art. No. 3800-2 and to the air pump with manometer Art. No. 3800-3



**Art. no. 3800-1/1**

Pipe Ø 30 – 50 mm



**Art. no. 3800-1/2**

Pipe Ø 50 – 80 mm



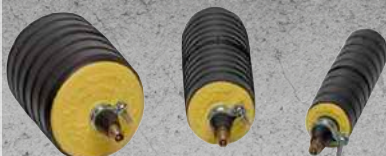
**Art. no. 3800-1/3**

Pipe Ø 70 – 100 mm



**Art. no. 3800-1/4**

Pipe Ø 90 – 150 mm



## Compressed air hose

- extension hose for sealing bubbles
- can be extended as required
- length 3 m

**Art. no. 3800-2**

Length 3 m





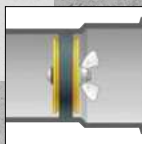
## Plug for inner pipe

Mechanical pipe sealing system for inner pipe

- ideal for sealing drain pipes and for long-term applications
- easy to insert and secure due to extra large wing nut
- resistant to use and waste water
- suitable for all types of pipe
- maximum counterpressure: 1.2 bar or 12 m
- Housing made of glass-fibre reinforced ABS plastic
- sealing ring based on natural rubber
- Galvanised threaded screw and wing nut - corrosion-resistant

Original Gripper - tested and proven, the most preferred mechanical shut-off discs on the market

Maximum Counter Pressure 1,2 bar corresponds to a 12 m water column



**Art. no. 3806/1**

Pipe Ø 96 – 103 mm



**Art. no. 3806/2**

Pipe Ø 147 – 154 mm



**Art. no. 3806/3**

Pipe Ø 196 – 204 mm



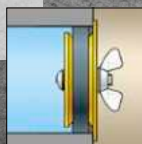
## Plug for end pipe

Mechanical pipe sealing system for end pipe

- ideal for sealing drain pipes and for long-term applications
- easy to insert and secure due to extra large wing nut
- resistant to use and waste water
- suitable for all types of pipe
- maximum counterpressure: 1.2 bar or 12 m
- Housing made of glass-fibre reinforced ABS plastic
- sealing ring based on natural rubber
- Galvanised threaded screw and wing nut - corrosion-resistant

Original Gripper - tested and proven, the most preferred mechanical shut-off discs on the market

Maximum Counter Pressure 1,2 bar corresponds to a 12 m water column



**Art. no. 3805/1**

Pipe Ø 39 – 42 mm



**Art. no. 3805/2**

Pipe Ø 49 – 55 mm



**Art. no. 3805/3**

Pipe Ø 71 – 79 mm



**Art. no. 3805/4**

Pipe Ø 96 – 103 mm



**Art. no. 3805/5**

Pipe Ø 147 – 154 mm





## Glass tile drill

### Single Drill

- optimally designed for cordless power tools
- 1/4" hexagonal shaft
- pointed chisel edge enables precision drilling, can be re-shar-pened
- shaft diameter 6.35 mm

**Please note: Only use in rotation (low rotation speed) and in sufficiently cool.**

Areas: ceramics, tiles, hard-fired tiles, glass, acrylic glass, mirror glass



**Art. no. 1368-1/5**

Ø 5 x 75 mm



**Art. no. 1368-1/6**

Ø 6 x 75 mm



**Art. no. 1368-1/8**

Ø 8 x 85 mm



**Art. no. 1368-1/10**

Ø 10 x 90 mm



**Art. no. 1368-1/13**

Ø 13 x 100 mm



**Art. no. 1368-1/14**

Ø 14 x 100 mm



## Glass tile drill set

- 5 piece
- Sizes: 2 x 6, 2 x 8.1 x 10 mm
- optimally designed for cordless power tools
- 1/4" hexagonal shaft
- pointed chisel edge enables precision drilling, can be re-shar-pened
- shaft diameter 6.35 mm

**Please note: Only use in rotation (low rotation speed) and in sufficiently cool.**

Areas: ceramics, tiles, hard-fired tiles, glass, acrylic glass, mirror glass

**Art. no. 1368**

5 pieces





## DIAMOND core drills BRIdiamondDrill

### Drilling without a centring aid

- connector M14 to be used with the angle grinder and BRIspeedDrill
- hi-grade diamond grains for fast working, provide clean results
- perfectly suited for drilling clean holes in granite and stone slabs, porcelain, ceramics and tiles
- extremely long service life thanks to high speeds (recommended: 8,000 – 14,000 rpm)
- special wax filling ensures cooling, no extra cooling required single hole drilling - only required if multiple holes are drilled



**Art. no. 1381-1/6**

Ø 6 mm



**Art. no. 1381-1/8**

Ø 8 mm



**Art. no. 1381-1/10**

Ø 10 mm



**Art. no. 1381-1/12**

Ø 12 mm



**Art. no. 1381-1/14**

Ø 14 mm



## DIAMOND core drills set BRIdiamondDrill

### Drilling without a centring aid

**7-pieces: Ø 2 x 6, 2 x 8, 10, 12, 14 mm**

- connector M14 to be used with the angle grinder and BRIspeedDrill
- hi-grade diamond grains for fast working, provide clean results
- perfectly suited for drilling clean holes in granite and stone slabs, porcelain, ceramics and tiles
- extremely long service life thanks to high speeds (recommended: 8,000 – 14,000 rpm)
- special wax filling ensures cooling, no extra cooling required single hole drilling - only required if multiple holes are drilled



**Art. no. 1381**

7 pieces





## DIAMOND tile drilling set BRIspeedDrill

Art. no. 13810

7pieces

NEW

**Achieve clean and precise hole drilling in tiles and porcelain stoneware tiles - with BRIspeedDrill, the most economical and fastest method!**

Bathrooms are no longer just functional spaces; they have evolved into wellness oases. Tiles are still the preferred choice for wall and floor coverings. However, things change here too: tiles and porcelain stoneware tiles are getting larger, thicker, and above all, harder.

When drilling with diamond drills, it is important to note that the hole is ground into the material rather than drilled. Diamond drilling is a grinding technique. Therefore, a 6 mm diamond drill requires a speed of 8,000 RPM. Grinding techniques require speed. Diamond drilling with, for example, a cordless screwdriver (approximately 1,300 RPM) is therefore only a makeshift solution and carries the risk of the drill slipping when starting (diamond drills do not have a centring point).

The new BRIspeedDrill set from BRINKO offers the advantage of a small, handy machine that is easy to use. In contrast to the BRIspeedDrill, working with an angle grinder in confined workspaces is very difficult. By precisely positioning with our BRIspeedDrill, the mounting holes are also covered by the usually very small cover rosettes.

Another advantage is the suitable speed of approximately 8,000 RPM compared to the angle grinder, which operates at 11,000 to 17,000 RPM and thus increases wear on the diamond drills.

### Content:

- Cordless high-speed drill with 8,000 RPM
- DIAMOND tile drill BRIdiamondDrill
- Sizes 2x Ø 6 mm, 2x Ø 8 mm, Ø 10 mm, Ø 14 mm
- Battery type 12 V, 2 Ah and 12 V, 4 Ah
- Charger
- Adapter M14a
- Various polishing pads





## DIAMOND core drills set BRldiamondDrill

Art. no. 1381-7

7 pieces

### Drilling without a centring aid

**7 pieces: Ø 3 x 6, 3 x 8, 10 mm**

- connector M14 to be used with the angle grinder and BRIspeedDrill
- hi-grade diamond grains for fast working, provide clean results
- perfectly suited for drilling clean holes in granite and stone slabs, porcelain, ceramics and tiles
- extremely long service life thanks to high speeds (recommended: 8,000 – 14,000 rpm)
- special wax filling ensures cooling, no extra cooling required
- single hole drilling - only required if multiple holes are drilled



## DIAMOND core drills set BRldiamondDrill

Art. no. 1381-6

7 pieces

### Drilling without a centring aid

**7 pieces: Ø 2 x 6, 8, 10, 12, 14 mm**

**1 Centering Guide stainless 5 – 40 mm**

- connector M14 to be used with the angle grinder and BRIspeedDrill
- hi-grade diamond grains for fast working, provide clean results
- perfectly suited for drilling clean holes in granite and stone slabs, porcelain, ceramics and tiles
- extremely long service life thanks to high speeds (recommended: 8,000 – 14,000 rpm)
- special wax filling ensures cooling, no extra cooling required
- single hole drilling - only required if multiple holes are drilled





## DIAMOND core drills set BRIdiamondDrill

Art. no. 1381-4

4 pieces

### Drilling without a centring aid

4 pieces: Ø 2 x 6, 8, 10 mm

- connector M14 to be used with the angle grinder and BRIspeedDrill
- hi-grade diamond grains for fast working, provide clean results
- perfectly suited for drilling clean holes in granite and stone slabs, porcelain, ceramics and tiles
- extremely long service life thanks to high speeds (recommended: 8,000 – 14,000 rpm)
- special wax filling ensures cooling, no extra cooling required
- single hole drilling - only required if multiple holes are drilled





## DIAMOND core drills BRIdiamondDrill

### Advantages of the DIAMOND drills:

- precise positioning, minimum risk of slipping off
- Safety, Fast, Efficiency & Sophisticated design
- special wax filling ensure cooling, no cooling water required
- hex shank Ø 8,2 mm
- wax filled core helps cooling and lubricates, need not watering
- a strong bond is made through the brazing process extending service life
- Diamond coated design reduces cutting heat for 5x longer working life

### Reliable cutting, drilling & grinding in the following materials:

- floor and wall tiles, hard porcelain
- granite and marble
- glass and fiberglass

**Art. no. 1379-3/5**

Pipe Ø 5 mm



**Art. no. 1379-3/6**

Pipe Ø 6 mm



**Art. no. 1379-3/8**

Pipe Ø 8 mm



**Art. no. 1379-3/10**

Pipe Ø 10 mm



**Art. no. 1379-3/12**

Pipe Ø 12 mm





## DIAMOND core drills set BRIdiamondDrill

Art. no. 1379-4

4 pieces

### Drilling without a centring aid

**4 pieces: Ø 2 x 6, 8, 10 mm**

- hi-grade diamond grains for fast working, provide clean results
- perfectly suited for drilling clean holes in granite and stone slabs, porcelain, ceramics and tiles
- extremely long service life thanks to high speeds (recommended)
- special wax filling ensures cooling, no extra cooling required single hole drilling - only required if multiple holes are drilled



## DIAMOND core drills set BRIdiamondDrill

Art. no. 1379-6

7 pieces

### Drilling without a centring aid

**7 pieces: Ø 2 x 6, 8, 10, 12, 14 mm**

**1 Centering Guide stainless 5 - 40 mm**

- hex shank Ø 8 mm
- hi-grade diamond grains for fast working, provide clean results
- perfectly suited for drilling clean holes in granite and stone slabs, porcelain, ceramics and tiles
- extremely long service life thanks to high speeds (recommended)
- special wax filling ensures cooling, no extra cooling required single hole drilling - only required if multiple holes are drilled





## HSS-bi-metal hole saw set | Plumbing standard

Art. no. 1384

6 pieces

### For sanitary work

- supplied in unbreakable plastic case, 6 pieces:
  - 5 HSS-bi-metal hole saws Ø 44, 57, 68, 75, 114 mm, 4 - 6 tpi
  - 1 SDS chuck adaptor with HSS drill
- cutting depth 40 mm
- for steel, Nirosta, non-ferrous metals, HAT pipe, wood and aerated concrete
- also ideal for switches and sockets
- all hole saws are also available individually Art. no. 1380



**brinko.de**

HAUPA GmbH, Lange Str. 40, D-42857 Remscheid, Germany  
Phone: +49 (0)2191 8418-0, Fax: +49 (0)2191 8418-840, E-mail: sales@haupa.com  
Prices upon request. Sales are conducted exclusively through specialized wholesalers.  
Technical changes and printing errors reserved.



## Double-hole punch

Art. no. 914

Ø 32 + 35 mm

To securely fasten mixer taps and spigot taps in kitchen sinks and other sheet materials, precise and accurately sized mounting holes are required.

**With the double-hole punch, mounting holes in the most commonly requested sizes Ø 32 mm and Ø 35 mm can be created cleanly and without contamination.**

**The double-hole punch is suitable for the following thicknesses:**

- Iron, steel, copper, and aluminium sheets up to 2 mm
- Stainless steel sinks and other stainless steel sheets up to 1.5 mm





## Deep-hole marker 2-in-1 with a sharpener

Art. no. 2528

black | yellow

### One pen – two functions

**With a cap:** Retractable pencil for precise marking and writing

**Without a cap:** Deep-hole marker for drilling and installation tasks

- very stable, with a practical clip
- sharpener integrated into the push-button
- graphite universal refill for marking on rough and smooth surfaces
- ergonomic, triangular form
- preserves resources and is environmentally-friendly
- designed for various refills for almost all surfaces and materials



# 2in1

## DRY Profi

Art. no. 2513

Length 150 mm

### Effective pressing mechanism for automatic lead propulsion in robust stainless steel tube

- easy one-handed operation thanks to improved clip
- integrated sharpener with guide – for fast sharpening at any time
- leads can be replenished from the front or back
- for all surfaces (wood, metal, glass, ceramics ...)
- special graphite lead included can be wiped off smooth surfaces with a damp cloth
- separately available coloured leads, water soluble or waterproof
- available in colour sets or individual colours for versatile use on light and dark backgrounds



brinko.de

HAUPA GmbH, Lange Str. 40, D-42857 Remscheid, Germany  
 Phone: +49 (0)2191 8418-0, Fax: +49 (0)2191 8418-840, E-mail: sales@haupa.com  
 Prices upon request. Sales are conducted exclusively through specialized wholesalers.  
 Technical changes and printing errors reserved.



## Universal knife

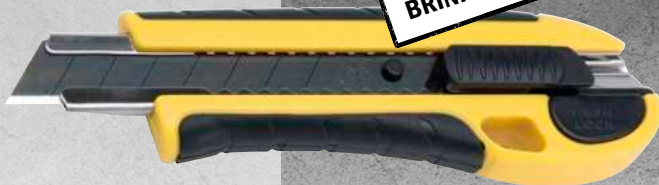
Art. no. 2980

160 x 45 x 25 mm

### Das Original BRINKO cutter knife

- ergonomic 2-component handle with soft plastic
- super-sharp, double-ground blade width 18 mm, thickness 0.5 mm
- blade feed with automatic lock
- 2 replacement blade strips in the handle
- colour: yellow, black

**Das Original  
BRINKO cutter knife**



## Blade dispenser Black Blades

Art. no. 2982

100 x 18 x 0,5 mm

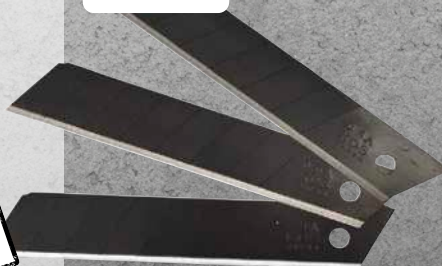
### Original BRINKO Black Blades

Cutter blades, 10-part, suitable for Art. no. 2980

- **super sharp blade** for precise cuts
- reinforced design
- fits all conventional cutter knives
- dual edge for maximum sharpness
- maximum lifespan thanks to flame hardening process
- ideal for various materials
- blade is coated black
- delivered in a dispenser
- 8 segments
- 100 x 18 x 0,5 mm

10 x

**Original  
BRINKO Black Blades**





## Fitter's hammer with 3-component handle

### Vibration-free fitter's hammer with 3-component handle.

The hammer head with the forged safety collar according to DIN 1041 and rubber protection sheath is secured mechanically in the handle with a heavy steel wedge. The high-safety handle comprises 3 components that are permanently connected to one another! The inner core is made of an aluminium alloy. A polyamide plastic (A2800) that is ultra-resistant to oils and solvents and also the non-slip rubber handle are moulded around this.

#### Benefits:

- Shock-absorbing, therefore gentle on the joints
- High-safety handle is indestructible
- The handle is permanently connected to the hammer head
- Non-slip handle allows ergonomic and safe work
- Highest possible level of safety



**Art. no. 1475/300**

Weight 300 g

**Art. no. 1475/500**

Weight 500 g

**Art. no. 1475/1000**

Weight 1000 g

## Club hammer with 3-component handle

### Vibration-free club hammer with 3-component high-safety handle.

The hammer head with the forged safety collar according to DIN 6475 and rubber protection sheath is secured mechanically in the handle with a heavy steel wedge. The high-safety handle comprises 3 components that are permanently connected to one another! The inner core is made of an aluminium alloy. A polyamide plastic (A2800) that is ultra-resistant to oils and solvents and also the non-slip rubber handle are moulded around this.

#### Benefits:

- Shock-absorbing, therefore gentle on the joints
- High-safety handle is indestructible
- The handle is permanently connected to the hammer head
- Non-slip handle allows ergonomic and safe work
- Highest possible level of safety



**Art. no. 1412/1000**

Weight 1000 g



**brinko.de**

HAUPA GmbH, Lange Str. 40, D-42857 Remscheid, Germany  
Phone: +49 (0)2191 8418-0, Fax: +49 (0)2191 8418-840, E-mail: sales@haupa.com  
Prices upon request. Sales are conducted exclusively through specialized wholesalers.  
Technical changes and printing errors reserved.



## Soft-faced hammer with 3-component handle

### Soft-faced hammer with 3-component high-safety handle and steel middle element.

Ideal for firm yet gentle hammering during installation work, alignment and attachment. White polyamide inserts are connected to the middle part by means of a dual-locking attachment system; this guarantees absolute safety at work. The inserts can be replaced and ordered separately. The high-safety handle comprises 3 components that are permanently connected to one another! The inner core is made of an aluminium alloy. A polyamide plastic (A2800) that is ultra-resistant to oils and solvents and also the non-slip rubber handle are moulded around this.

**Note: Not recoil-free!**

#### Benefits:

- Shock-absorbing, therefore gentle on the joints
- Dual-locking attachment system of the polyamide inserts
- High-safety handle is indestructible
- The handle is permanently connected to the hammer head
- Non-slip handle allows ergonomic and safe work
- Highest possible level of safety

**Art. no. 1480/32**

Head Ø 32 mm

**Art. no. 1480/40**

Head Ø 40 mm





## Tool case plumbing

### Hard-top case, black

- dimensions 480 x 370 x 225 mm
- alu frame
- non-slip carrying handle
- 2 locks
- with shoulder strap
- reinforced metal corners as additional protection against damage

### Inside:

- 2 tool kits completely removable
- document pocket
- bottom half of case equipped with variable partitions

Art. no. 7410

empty, 480 x 370 x 225 mm

ABS



6,50 kg



brinko.de

HAUPA GmbH, Lange Str. 40, D-42857 Remscheid, Germany  
Phone: +49 (0)2191 8418-0, Fax: +49 (0)2191 8418-840, E-mail: sales@haupa.com  
Prices upon request. Sales are conducted exclusively through specialized wholesalers.  
Technical changes and printing errors reserved.



## Skater tool trolley

Art. no. 7413

empty, 470 x 360 x 220 mm

### Hardshell case made of PP plastic, black

- inside dimensions 470 x 360 x 220 mm
- extremely robust design, shell highly impact resistant and almost indestructible
- rigid frame made of hardened aluminium
- 3 sturdy back hinges, sturdy lid holders riveted 4 times
- case corners additionally reinforced with aluminium attachments
- ergonomic telescopic handle
- integrated trolley system with ball bearing skate wheels
- lockable locks and additional combination lock
- removable compartment dividers in the case bottom with cover
- 3 tool plates and document compartment

**HDPE** \*\*\*\*



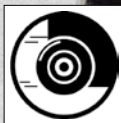
INSENSITIV



CORROSION  
FIRMLY



SHOCKRESISTANT BIKES



**9,30 kg**



**BRINKO**  
powered by **haupa**





**brinko.de**

HAUPA GmbH, Lange Str. 40, D-42857 Remscheid, Germany  
Phone: +49 (0)2191 8418-0, Fax: +49 (0)2191 8418-840, E-mail: [sales@haupa.com](mailto:sales@haupa.com)  
Prices upon request. Sales are conducted exclusively through specialized wholesalers.  
Technical changes and printing errors reserved.



## Young technician toolbox Plumbing/heating

Art. no. 7421

23 pieces, 480 x 370 x 225 mm

NEW

### Hard-top case, black, fitted with 22 special tools

- dimensions 480 x 370 x 225 mm
- black alu frame, non-slip carrying handle, 2 locks, with shoulder strap
- reinforced metal corners as additional protection against damage

### Inside:

- 2 tool kits completely removable, document pocket, bottom half of case
- equipped with variable partitions

### Content:

- 83 Ratchet wrenches 4 in 1, 10 x 13 und 17 x 19 mm
- 105/10 Plumbing installation wrench
- 128 Universal screw insert Ø 9 – 21 mm
- 129-9 Connecting square 1/2"
- 633/35 Pipe cutter with deburrer to Ø 32 mm
- 655 Combination washbasin tap wrench
- 662 Toilet seat & sanitary installation wrench  
BRImultiKey 19 in 1
- 675 Step wrench set 86 mm
- 687/250 Water pump pliers 250 mm
- 689/240 Fittings pliers | Key pliers 240 mm
- 1470/300 Cross peen hammer 300 g
- 1728/146 Universal bow saw
- 2126/7 Screwdriver set, 7 pieces  
4 slot-head screwdrivers 75 x 2.5,  
100 x 4, 125 x 5.5, 150 x 6.5 mm  
2 cross-head screwdrivers PZ 1, PZ 2  
1 Safety voltage tester 150 - 250 Volt
- 2528 Deep-hole marker 2-in-1 with a sharpener
- 2980 Universal knife for cutter blades 18 mm
- 180094 Electrician's chisel 200 x 12 mm



11,00 kg

**BRINKO**  
powered by **haupa**



## Apprentice case BRlbasic

### Hard case, black, fitted with 14 special tools

2 tool boards and document pocket completely removable, lockable, incl. 2 keys, bottom tray with variable dividers made of aluminum, reinforced metal corners as additional protection against damage, Tool case empty, Art. no. 220030

#### Content:

- Screwdriver set 6 pieces, Art. no. 2122  
4 slot-head screwdrivers 80 x 3, 100 x 4, 125 x 5.5, 150 x 6.5 mm  
2 cross-head screwdrivers PZ 1, PZ 2
- Water pump pliers 240 mm, Art. no. 680/240
- Cross peen hammer 300 g, Art. no. 1470/300
- Pipe cutter, Art. no. 633/35
- Universal knife, Art. no. 2980
- Plumbing installation wrench, Art. Nr. 105/10
- Universal bow saws, Art. no. 1728/146
- Hex key set, 7 pieces, 2.5, 3, 4, 5, 6, 8, 10 mm, Art. no. 111/2
- Spirit level, Art. no. 2839
- Tool case empty, Art. no. 220030



Art. no. 7416

14 pieces, 460 x 350 x 180 mm

ABS



8,88 kg



brinko.de

HAUPA GmbH, Lange Str. 40, D-42857 Remscheid, Germany  
Phone: +49 (0)2191 8418-0, Fax: +49 (0)2191 8418-840, E-mail: sales@haupa.com  
Prices upon request. Sales are conducted exclusively through specialized wholesalers.  
Technical changes and printing errors reserved.



## Tool case Plumbing EXCLUSIVE

Art. no. 7438

37 pieces, 480 x 370 x 225 mm

### Hard-top case, black, fitted with 37 special tools

- dimensions 480 x 370 x 225 mm
- black alu frame, non-slip carrying handle, 2 locks, with shoulder strap
- reinforced metal corners as additional protection against damage

### Inside:

- 2 tool kits completely removable, document pocket, bottom half of case
- equipped with variable partitions

### Content:

- 22-1/300 Instrument key 300 mm
- 56 Open-end wrench 10 x 13 mm / 17 x 19 mm
- 92 Socket wrench 10 x 11, 12 x 13, 17 x 19, 19 x 22
- 105/10 Plumbing installation wrench
- 106-2 Plumbing four-way socket wrench
- 114 Hex key set, • 129-3/250 Reversible ratchet
- 129-7/125 Extension
- 129-12 BRImultiLock insert 10, 13, 17 mm
- 619/1 Corner pipe pliers 320 mm, 49 mm, 1"
- 631-5 Miniature pipe cutter
- 633/35 Pipe cutter with deburrer up to Ø 35 mm / 1 3/8", up to Ø 32 mm / 1 1/4"
- 655 Combination washbasin tap wrench
- 673/86 Step wrench 86 mm
- 687/250 Water pump pliers 250 mm
- 1333/200-10 Electrician's chisel 10 mm
- 1470/500 Cross peen hammer 500 g
- 1654-1/250 Engineer's file | half round
- 1710 Burner brush
- 1726/146 Universal bow saws
- 2070/125 Slot-head screwdriver 5.5 x 125
- 2070/150 Slot-head screwdriver 6.5 x 150
- 2080/1 Screwdriver | PZ1 x 80 / 2 - 3 mm
- 2080/2 Screwdriver | PZ2 x 100 / 3 - 5.2 mm
- 2088/145 Voltage tester
- 2524/235 All-purpose pencil 235 mm
- 2705/2 Cutting Folding ruler 2 m
- 2980 Universal knife
- 2999-1/25 Solder water brush 25 mm, 1"
- 3820 Hemp dispenser
- 2836/400 Lightweight metal spirit level 400 mm

ABS



16,49 kg



**BRINKO**  
powered by haupa



## V-Press jaw set

Art. no. 625-10SE

5 pieces

Press jaws also wear out during use. Replacing them guarantees the safety of the pressing process and safeguards the worker by using suitable press jaws.

BRINKO offers the most commonly used sizes V15, V22, V28, and V35 in a specially equipped BRINKO box with the V-Press jaw set. The BRINKO box has 2 additional slots where intermediate sizes like V12 and V18 can be stored, as well as a compartment for additional equipment such as pipe cutters or deburrers.

### Contents:

V-Press jaws V15, V22, V28, and V35

These pressing jaws also fit all 32 KN machines from other manufacturers.



The empty area in the case can be used very well for customising with common aids for everyday needs.

**Not included in the set!**



625-10/15



625-10/22



625-10/28



625-10/35



**brinko.de**

HAUPA GmbH, Lange Str. 40, D-42857 Remscheid, Germany  
Phone: +49 (0)2191 8418-0, Fax: +49 (0)2191 8418-840, E-mail: sales@haupa.com  
Prices upon request. Sales are conducted exclusively through specialized wholesalers.  
Technical changes and printing errors reserved.



## M-Press jaw set

Art. no. 625-13SE

5 pieces

Press jaws also wear out during use. Replacing them guarantees the safety of the pressing process and safeguards the worker by using suitable press jaws.

BRINKO offers the most commonly used sizes M15, M22, M28, and M35 in a specially equipped BRINKO box with the M-Press jaw set. The BRINKO box has 2 additional slots where intermediate sizes like M12 and M18 can be stored, as well as a compartment for additional equipment such as pipe cutters or deburrers.

### Contents:

M-Press jaws M15, M22, M28, and M35

These pressing jaws also fit all 32 KN machines from other manufacturers.



The empty area in the case can be used very well for customising with common aids for everyday needs.

**Not included in the set!**



625-13/15



625-13/22



625-13/28



625-13/35



## Cordless Pressing Tool AC0203 BT | 5.0 Ah

Art. no. 625-5PM/AC0203

Pipe Ø 12 – 110 mm

**Comfort Line AC0203 - a new generation of pressing technology – NEW WITH BLUETOOTH**

### Supplied in case:

cordless pressing unit, 1 rechargeable battery 18 V 5.0 Ah Li-Ion, 1 charger, storage space for up to 6 press jaws PB2

- Data transfer via Bluetooth®
- for press connections 12 – 54 (108) mm metal, 16 – 110 mm plastic
- fits securely in your hand: 2.8 kg, 39 cm long (without press jaw), ergonomic shape
- Features: pressing area illumination, implemented force monitoring and diagnosis function, innovative brushless motor technology for faster pressing process and more pressings per battery charge
- output: 450 W, piston force: 32 kN, piston stroke: 40 mm
- rechargeable battery: 18 V Li-Ion 5.0 Ah, battery capacity: up to 250 pressing processes, charging time: 60 min
- compatible with novopress PB2 press jaws Art. no. 625-30 to -35 and novopress PS2 press collars Art. no. 625-40 to -45



**8,30 kg**



**brinko.de**

HAUPA GmbH, Lange Str. 40, D-42857 Remscheid, Germany  
Phone: +49 (0)2191 8418-0, Fax: +49 (0)2191 8418-840, E-mail: sales@haupa.com  
Prices upon request. Sales are conducted exclusively through specialized wholesalers.  
Technical changes and printing errors reserved.



## Suction Cup

Art. no. 1180

0,39 kN

Guaranteed the right Suction Cup for your application with the highest degree of security

- plastic body, 2x suction disc Ø 120 mm
- load-bearing capacity: up to max. ◀▶ 80 kg, ⬆ 40 kg
- guideline value – use under the specified value recommended
- handle is covered with non-slip rubber

Can be used on all materials with smooth, sealed surfaces (e.g. panes of glass, tiles, stone, sheet steel, panels made of coated wood)

### Safety information:

- the surface of the object and the suction discs must not be greasy
- before lifting a weight, carry out a test
- never walk under the load and never lift above yourself or others



## Tension cable | 8 mm, length 1 m

Art. no. 1140/8

Length 1 m

- Rubber tension cable 8 mm thick and 100 cm long
- latex core
- with two rubberised universal wire hooks
- approved lashing capacity: 70 N ~ 7.1 kg





## Breathable protective gloves

- Nitrile coating, pimpled
- extremely grippy due to high abrasion resistance
- very comfortable to wear, hands remain cool and dry



**Art. no. 3454/9**

Size 9



**Art. no. 3454/10**

Size 10



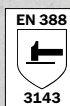
**Art. no. 3454/11**

Size 11



## Work gloves BRIGecko

- Premium quality
- 100 % polyamide, finely knitted
- latex-coated glove palm
- repels liquid
- excellent fit



**Art. no. 3458/9**

Size 9



**Art. no. 3458/10**

Size 10





## BRImobileWork folding workbench

Art. no. 5641/800

785 x 585 mm

NEW

**Back-friendly work with maximum work safety!**  
**Easy to transport with one hand - effortless to move thanks to wheels and pull rod, simple folding mechanism - quick to assemble.**

**Safe stand!**

The compact folding workbench "BRImobileWork" offers the perfect balance of weight, mobility, stability, size and functionality. Ideal for use on construction sites, as well as space-saving and mobile.

- Weight under 20 kg
- Work surface 785 x 585 mm and a 30 mm thick screen-printed plate
- Working height 800 - 825 mm thanks to four adjustable feet to compensate for uneven surfaces
- Load capacity up to 200 kg (surface load)
- Dimensions when folded 785 x 250 x 585 mm
- Two large plastic wheels and fold-out pull rod for easy transport when folded up
- Can be moved over the two wheels when assembled by tilting the workbench
- Table legs made of galvanized square tube are locked by a crossbar with a spring mechanism for a firm stand
- Screen-printed plate with anti-slip surface and framed in T-profile steel frame
- Vice and other holding systems can be mounted

