

EN

Special offer
International

Bulk storage chests 2018

Light, versatile and even more stable!



haupa[®]

End sleeve assortment

Content: 5.100 insulated end sleeves,
1 crimping pliers (art. no. 210804), crimp 0,5 - 10 mm², in plastic bulk
storage chest 415 x 335 x 90 mm

Qty.	Description	Length mm	CS mm ²
100	Twin end sleeves	8	0,5
100	Twin end sleeves	8	0,75
100	Twin end sleeves	8	1
100	Twin end sleeves	8	1,5
100	Twin end sleeves	10	2,5
100	Twin end sleeves	12	4,0
100	Twin end sleeves	14	6,0
500	insulated end sleeves	8	0,5
500	insulated end sleeves	8	0,75
1.000	insulated end sleeves	8	1
1.000	insulated end sleeves	8	1,5
500	insulated end sleeves	8	2,5
500	insulated end sleeves	10	4
200	insulated end sleeves	12	6
200	insulated end sleeves	12	10

Art. no. 270888

Serie DIN



Art. no. 270890

Serie II (german)



Art. no. 270888

End sleeve assortment

Content: 5.300 insulated end sleeves,
1 crimping pliers (art. no. 210842), crimp 1 - 10 mm², in plastic bulk
storage chest 415 x 335 x 90 mm

Qty.	Description	Length mm	CS mm ²
1.000	insulated end sleeves	8	1
1.000	insulated end sleeves	8	1,5
1.000	insulated end sleeves	8	2,5
500	insulated end sleeves	10	4
200	insulated end sleeves	12	6
200	insulated end sleeves	12	10
500	insulated end sleeves	12	1
300	insulated end sleeves	18	1,5
250	insulated end sleeves	18	2,5
200	insulated end sleeves	18	4
100	insulated end sleeves	18	6
50	insulated end sleeves	18	10

Art. no. 270891

Serie DIN



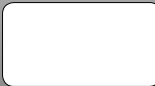
Art. no. 270892

Serie I (french)



Art. no. 270893

Serie II (german)



Art. no. 270891

End sleeve assortment

Content: 1.150 insulated end sleeves,
1 crimping pliers (art. no. 210824), crimp 0,75 - 16 mm², in plastic bulk
storage chest 415 x 335 x 90 mm

Qty.	Description	Length mm	CS mm ²
200	insulated end sleeves	8	0,75
200	insulated end sleeves	8	1
200	insulated end sleeves	8	1,5
200	insulated end sleeves	8	2,5
100	insulated end sleeves	10	4
100	insulated end sleeves	12	6
100	insulated end sleeves	18	10
50	insulated end sleeves	18	16

Art. no. 270882/DIN

Serie DIN



Art. no. 270882

Serie I (french)



Art. no. 270894

Serie II (german)



Art. no. 270882

Assortment for Combi-Crimp

Content: 2.700 insulated end sleeves, 1.100 insulated terminals, 1 crimping pliers (210784) for insulated terminals 0,5 - 2,5 mm² and end sleeves 0,5 - 6 mm², in plastic bulk storage chest 415 x 335 x 90 mm

Qty.	Description	Length mm	CS mm ²	M
500	insulated end sleeves	8	0,5	
500	insulated end sleeves	8	0,75	
500	insulated end sleeves	8	1	
500	insulated end sleeves	8	1,5	
500	insulated end sleeves	8	2,5	
100	insulated end sleeves	10	4	
100	insulated end sleeves	12	6	
200	insulated butt connectors		0,5-1,0	
200	insulated butt connectors		1,5-2,5	
100	insulated socket sleeves		0,5-1,5	6,3x0,8
100	insulated socket sleeves		1,5-2,5	6,3x0,8
100	insulated ring terminals		0,5-1,0	M4
100	insulated ring terminals		0,5-1,0	M5
100	insulated ring terminals		1,5-2,5	M4
100	insulated ring terminals		1,5-2,5	M5
100	insulated ring terminals		1,5-2,5	M6

Art. no. 270895
Serie DIN

Art. no. 270896
Serie I (french)

Art. no. 270897
Serie II (german)



Art. no. 270895

Assortment of insulated terminals

Content: 1.200 crimping terminals, 1 crimping pliers (art. no. 210761), crimp 0,5 - 6,0 mm², in plastic bulk storage chest 415 x 335 x 90 mm

Qty.	Description	CS mm ²	M	Art. no.
100	insulated ring terminals	0,5-1,0	M4	260256
100	insulated ring terminals	0,5-1,0	M5	260258
100	insulated ring terminals	0,5-1,0	M6	260260
100	insulated ring terminals	1,5-2,5	M4	260270
100	insulated ring terminals	1,5-2,5	M5	260272
100	insulated ring terminals	1,5-2,5	M6	260274
100	insulated ring terminals	4,0-6,0	M5	260286
100	insulated ring terminals	4,0-6,0	M6	260288
100	insulated ring terminals	4,0-6,0	M8	260290
100	insulated butt connectors	0,5-1,0		260350
100	insulated butt connectors	1,5-2,5		260352
100	insulated butt connectors	4,0-6,0		260354

Art. no. 260765
0,5 - 6,0 mm²



Assortment of insulated terminals

Content: 1.200 crimping terminals, 1 crimping pliers (art. no. 210802), crimp 0,5 - 6,0 mm², in plastic bulk storage chest 415 x 335 x 90 mm

Qty.	Description	CS mm ²	M	Art. no.
100	insulated ring terminals	0,5-1,0	M4	260256
100	insulated ring terminals	0,5-1,0	M5	260258
100	insulated ring terminals	0,5-1,0	M6	260260
100	insulated ring terminals	1,5-2,5	M4	260270
100	insulated ring terminals	1,5-2,5	M5	260272
100	insulated ring terminals	1,5-2,5	M6	260274
100	insulated ring terminals	4,0-6,0	M5	260286
100	insulated ring terminals	4,0-6,0	M6	260288
100	insulated ring terminals	4,0-6,0	M8	260290
100	insulated butt connectors	0,5-1,0		260350
100	insulated butt connectors	1,5-2,5		260352
100	insulated butt connectors	4,0-6,0		260354

Art. no. 260777
0,5 - 6,0 mm²



haupa

... convincing solutions

Assortment of tubular cable lugs, standard

Content: 380 cable lugs,
1 crimping pliers (art. no. 210805), crimp standard 6 - 50 mm²,
hexagon crimping, in plastic bulk storage chest 415 x 335 x 90 mm

Qty.	Description	CS mm ²	M	Art. no.
50	cable lugs, standard, tinned	6	M6	290934
50	cable lugs, standard, tinned	6	M8	290936
50	cable lugs, standard, tinned	10	M6	290940
50	cable lugs, standard, tinned	10	M8	290942
30	cable lugs, standard, tinned	16	M8	290952
40	cable lugs, standard, tinned	16	M10	290954
25	cable lugs, standard, tinned	25	M8	290960
25	cable lugs, standard, tinned	25	M10	290962
20	cable lugs, standard, tinned	35	M8	290968
20	cable lugs, standard, tinned	35	M10	290970
20	cable lugs, standard, tinned	50	M8	290978

Art. no. 290380
6 - 50 mm², standard

Video 210805



Assortment of tubular cable lugs, DIN 46235

Content: 380 cable lugs,
1 crimping pliers (art. no. 210805K), crimp DIN 6 - 50 mm²,
hexagon crimping, in plastic bulk storage chest 415 x 335 x 90 mm

Qty.	Description	CS mm ²	M	Art. no.
50	cable lugs, DIN 46235, tinned	6	M6	290404
50	cable lugs, DIN 46235, tinned	6	M8	290406
50	cable lugs, DIN 46235, tinned	10	M6	290410
50	cable lugs, DIN 46235, tinned	10	M8	290412
30	cable lugs, DIN 46235, tinned	16	M8	290418
40	cable lugs, DIN 46235, tinned	16	M10	290420
25	cable lugs, DIN 46235, tinned	25	M8	290426
25	cable lugs, DIN 46235, tinned	25	M10	290428
20	cable lugs, DIN 46235, tinned	35	M8	290434
20	cable lugs, DIN 46235, tinned	35	M10	290436
20	cable lugs, DIN 46235, tinned	50	M8	290440

Art. no. 290382
6 - 50 mm², DIN

Video 210805



Easy reordering
article number and barcode
on every box



“Pan head” Screws assortment box



Content: 1.700 screws, in plastic bulk storage chest 415 x 335 x 90 mm

Qty.	Description	Size	Art. no.
200	universal pan head screws	3,5 x 30	790091
200	universal pan head screws	3,5 x 40	790093
200	universal pan head screws	4,0 x 30	790100
200	universal pan head screws	4,0 x 40	790102
200	universal pan head screws	4,0 x 50	790104
200	universal pan head screws	4,5 x 40	790111
200	universal pan head screws	4,5 x 50	790113
100	universal pan head screws	5,0 x 30	790118
100	universal pan head screws	5,0 x 40	790120
100	universal pan head screws	5,0 x 50	790121
1	Bit-Box 17-pcs., incl. holder		102210

Art. no. 792804

1.700-pcs., 415 x 335 x 90 mm



**Bit-Box
for free**



“Countersunk special” Screws assortment box



Content: 1.800 screws, in plastic bulk storage chest 415 x 335 x 90 mm

Qty.	Description	Size	Art. no.
200	universal counter-sunk screws	3,0 x 15	790005
200	universal counter-sunk screws	3,0 x 25	790006
200	universal counter-sunk screws	3,0 x 40	790008
200	universal counter-sunk screws	4,0 x 30	790027
200	universal counter-sunk screws	4,0 x 40	790029
200	universal counter-sunk screws	4,0 x 50	790031
200	universal counter-sunk screws	4,5 x 40	790041
100	universal counter-sunk screws	5,0 x 40	790053
100	universal counter-sunk screws	5,0 x 50	790054
100	universal counter-sunk screws	5,0 x 60	790055
50	universal counter-sunk screws	6,0 x 60	790064
50	universal counter-sunk screws	6,0 x 80	790065
1	Bit-Box 17-pcs., incl. holder		102210

Art. no. 792810

1.800-pcs., 415 x 335 x 90 mm



**Bit-Box
for free**



“Mix Tx” Screws assortment box

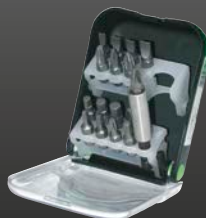


Content: 1.475 screws, in plastic bulk storage chest 415 x 335 x 90 mm

Qty.	Description	Size	Art. no.
200	TwinSpeed counter-sunk screws Tx	2,9 x 15	793005
200	TwinSpeed counter-sunk screws Tx	2,9 x 30	793007
200	TwinSpeed counter-sunk screws Tx	2,9 x 40	793008
200	TwinSpeed counter-sunk screws Tx	4,2 x 35	793040
100	TwinSpeed counter-sunk screws Tx	4,2 x 50	793043
100	TwinSpeed counter-sunk screws Tx	4,8 x 50	793054
50	TwinSpeed counter-sunk screws Tx	6,3 x 80	793065
200	TwinSpeed pan head screws Tx	3,9 x 30	793100
100	TwinSpeed pan head screws Tx	3,9 x 40	793102
50	TwinSpeed pan head screws Tx	4,8 x 50	793121
50	hexagonal wood screws	6,0 x 40	790210
25	hexagonal wood screws	6,0 x 80	790212

Art. no. 792816

1.475-pcs., 415 x 335 x 90 mm



**Bit-Box
for free**



haupa

... convincing solutions

Assortment boxes with metal catch and pick boxes

black plastic, including pick boxes

Content: 16 pcs.

- 4 Boxes 49 x 49 x 72 mm
- 6 Boxes 49 x 98 x 72 mm
- 2 Boxes 98 x 98 x 72 mm
- 4 Boxes 98 x 148 x 72 mm



Baseplate

Art. no. 221131
415 x 335 x 90 mm

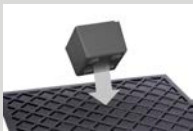


Art. no. 221133
without boxes, 415 x 335 x 90 mm



Box S | Box M | Box L | Box XL

ABS, conical design for stacking with snap on base plate
(Art. no. 221138)



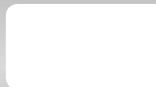
Art. no. 221134
49 x 49 x 72 mm



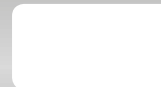
Art. no. 221136
98 x 98 x 72 mm



Art. no. 221135
98 x 49 x 72 mm



Art. no. 221137
148 x 98 x 72 mm



haupa[®]

... convincing solutions