

# Punch and bending centre

## Basic unit

Basic unit to accommodate bending, hole-making, cutting and cranking tools. The processing of lamellar copper rails is possible! Hydraulic tool for connection to a hydraulic pump with 700 bar (10,000 PSI).

The universal tool system is particularly suited for use in workshops and on building sites. Copper and aluminium rails can be processed up to dimension of 12 x 120 mm. The changing of the individual tools is carried out in seconds thanks to the user-friendly construction. The compact construction and light weight enable transportation in any car.

### Bending:

Thanks to an integrated proximity switch a 100% repeat accuracy is achieved. The maximum bending angle is 110°.

### Hole-making:

The height-adjustable table with side stopper makes working easier. Marking out and measuring is not necessary. Holes from 6.5 to 21.0 mm in diameter can be punched.

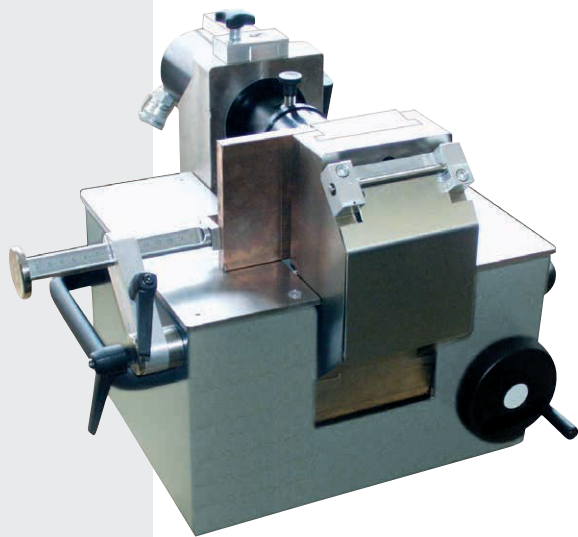
Slotted holes up to 14 x 20 mm. With the hole tool II holes can be made in lamellar copper rails and grounding bands.

### Cutting:

Our cutting blade geometry enables clean and burr-free cutting.

### Cranking:

The offsetting (stepped bending) by a material thickness is carried out in a single process.



Art. no.	kg	PU
216770	51,000	1

## Hole-making tools

For punching round and slotted holes.

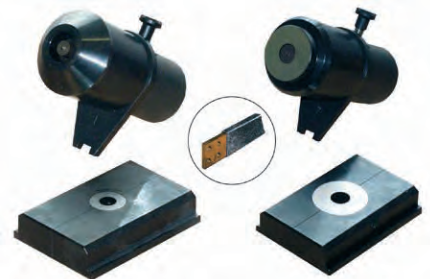
- Maximum material thickness: 12 mm
- Maximum diameter: 21 mm
- Maximum slotted hole: 17 x 20 mm

### 216776:

Hole tool for solid copper and aluminium rails

### 216777:

Hole-making tool for solid copper and aluminium rails as well as for laminated copper rails and grounding bands



Art. no.	kg	PU
216776	4,300	1
216777	4,300	1

## Hole inserts for round holes

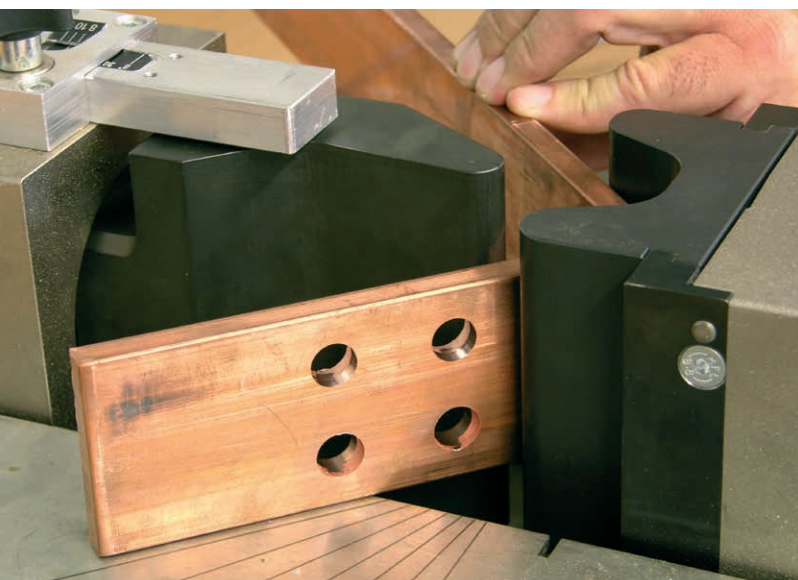
For both hole-making tools, the following diameters can be supplied

Art. no.	∅		kg	PU
216778	6,5	M6 > 216776	0,118	1
216778/L	6,5	M6 > 216777	0,421	1
216779	9,0	M8 > 216776	0,114	1
216779/L	9,0	M8 > 216777	0,420	1
216780	10,5	M8 > 216776	0,110	1
216780/L	10,5	M8 > 216777	0,419	1
216781	11,0	M10 > 216776	0,106	1
216781/L	11,0	M10 > 216777	0,418	1
216782	12,7	M10 > 216776	0,102	1
216782/L	12,7	M10 > 216777	0,416	1
216783	13,0	M12 > 216776	0,098	1
216783/L	13,0	M12 > 216777	0,414	1
216784	17,0	M16 > 216776	0,094	1
216784/L	17,0	M16 > 216777	0,412	1
216785	21,0	M20 > 216776	0,090	1
216785/L	21,0	M20 > 216777	0,411	1

## Hole inserts for slotted holes

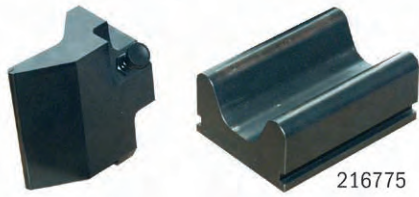
For both hole-making tools, the following diameters can be supplied

Art. no.	∅		kg	PU
216786	9x18	M8 > 216776	0,098	1
216786/L	9x18	M8 > 216777	0,423	1
216787	11x20	M10 > 216776	0,095	1
216787/L	11x20	M10 > 216777	0,421	1
216788	13x20	M12 > 216776	0,092	1
216788/L	13x20	M12 > 216777	0,419	1
216789	17x20	M16 > 216776	0,089	1
216789/L	17x20	M16 > 216777	0,417	1



### Bending tool

For bending of solid copper or aluminium rails up to 12 x 120 mm. The bending matrix suits all bending radii



Art. no.		kg	PU
216771	5	4,000	1
216772	8	4,100	1
216773	10	4,200	1
216774	20	4,500	1
216775	universal (counterholder)	3,200	1

### Cutting tool

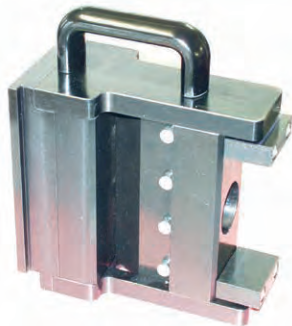
for separating solid copper and aluminium rails up to 12 x 120 mm



Art. no.	mm	kg	PU
216790	12 x 120	5,500	1

### Cutting tool for lamellar rails

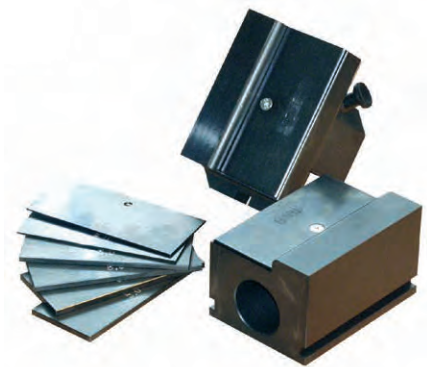
for separating lamellar rails made from copper, maximum dimensions: 12 x 120 mm



Art. no.	mm	kg	PU
216791	12 x 120	9,000	1

### Cranking tool for stepped bending of power rails

for creating a material offset in rail thicknesses on a length of just 30 mm. Possible offset 5, 6, 8, 10 and 12 mm



Art. no.	kg	PU
216792	10,000	1

### Tool cases

Stable metal sheet case for accommodation of hole-making tool with inserts (1) or two tools (2)

Art. no.	quantity	kg	PU
216793	1	2,000	1
216794	2	2,000	1

### Electro-hydraulic pump „Special“

electric foot switch, completely self-acting, also the release of the dies at the end of the operation, 2 m high pressure tube and hydraulic connectors, for industrial uses, where a high level of production is needed, 230 volt, with foot switch control, pump for working outside



Art. no.	230V	kg	PU
216359		22,000	1

**haupa**<sup>®</sup>

**...convincing solutions**

Germany: HAUPA, Koenigstr. 165-169, 42853 Remscheid, Phone: +49 (0)2191 8418-0, Fax: +49 (0)2191 8418-840, sales@haupa.com



