




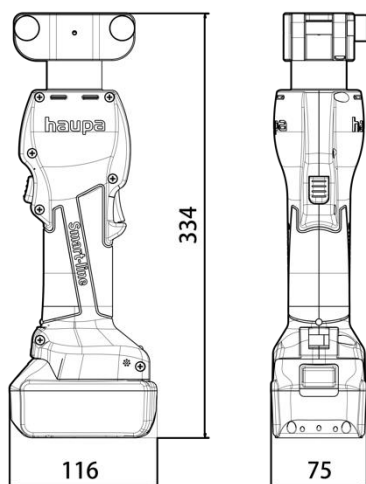


# Battery powered crimping tool „US-6M“

Art. 216760-1



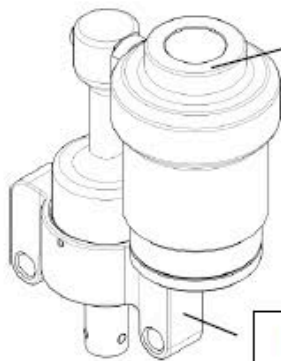
<b>60 kN</b>	<b>700 bar</b>	<b>180°</b>	
<b>Li-ION 18V 2Ah</b>	<b>SysCon</b> 		<b>Sensor technik</b>



SPECIFICATION	
MODEL NO.	216760-1
OUTPUT	6 TON
VOLTAGE	DC 18V
PRESSURE	700 KG/CM <sup>2</sup>
WEIGHT	2.4 KGS (WITHOUT BATTERY)
DIMENSION	116mm(L)x75mm(W)x334mm(H)
CHARGING TIME	60-70 MINUTES(215525)/30 MINUTES(215523)
ACCESSORY	CHARGER/BATTERY SET & SYSCON
FEATURES	<ul style="list-style-type: none"> <li>● Quick-exchange design for head</li> <li>● LED working light design</li> <li>● Multi-function/one body with different application heads</li> </ul>

KOPF TYPE & APPLICATION						
HEAD DRAWING						
MODEL NO.	216764	216762	216761	216763	216665-U	216666-U
LENGTH(mm)	180	233	140	130	170	225
WIDTH(mm)	134	148	90	93	136	136
HEIGHT(mm)	70	93	60	34	60	60
WEIGHT(kg)	2.7	2.8	1.7	1.2	3	3
APPLICATION	<b>+ Punching +</b> galvannealed steel plate Max. thickness 3.2mm or stainless-steel plate Max. thickness 1.6mm	<b>+ Cutting +</b> Blade opening: Dia. 50mm	<b>+ Crimping +</b> Connector crimping	<b>+ Crimping +</b> Connector crimping Type: Dieless	<b>+ Crimping +</b> Quad-Mandrel	<b>+ Crimping +</b> Quad-Mandrel
RANGE	Punch-dies size 1/2"-2" Thickness range 1.6-3.2mm	Copper Cable 500sqmm Aluminum Cable 750sqmm	DIN 10-300 mm <sup>2</sup> AWG8-600MCM	Copper Connector 16-240 mm <sup>2</sup> Aluminium Connector 50-240 mm <sup>2</sup>	DIN 16-300 mm <sup>2</sup> AWG6-600MCM	DIN 25-400 mm <sup>2</sup> AWG3-750MCM

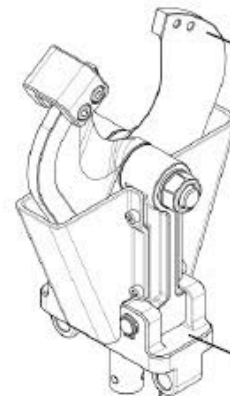
**216764**



Rotating  
Hydraulic  
Punch

Head Cap

**216762**



Cutting  
Blade

Head Cap

T-Platte

**Mode LED**  
(Green/Red)

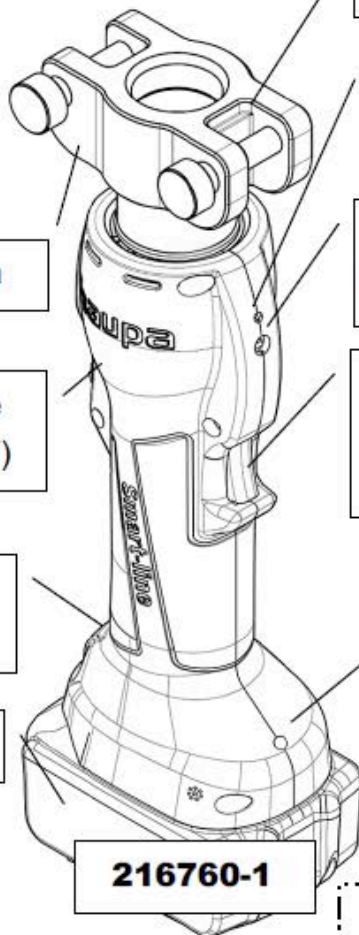
**Mode Switch**

Press for mode changing

Start  
Button  
(ON)

LED

**216760-1**



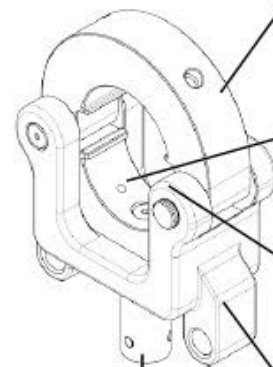
T-Bar/Latch

Oil-Release  
Button (OFF)

Battery  
Lock

Battery

**216761**



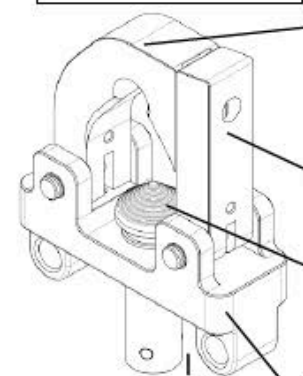
Upper Die  
Base

Low Dies  
Base

Fixed Pin

Head Cap

**216763**



L-Base

I-Base

Dies

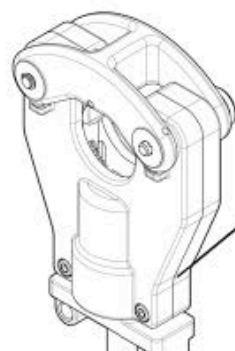
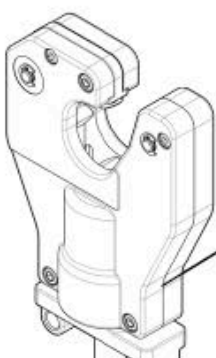
Head Cap

Hydraulic  
Crimping  
Head

Hydraulic  
Crimping  
Head

**216666-U**

**216665-U**



**haupa**

## REMARKS BEFORE OPERATION OR WHILE OPERATING



- ◆ Please wear protective equipment while operating to make sure your safety. Warning: This tool & heads are not insulated.
- ◆ Please kindly check the crimping/cutting/punching range and suitable crimping/cutting/punching materials before any action. (You could find the range at this manual page 1) Do not crimp/cut/punch without any material in working area, otherwise the tool will be damaged.
- ◆ After operation of tool, please press the oil-release button to set the tool hydraulic ram back to original position. And separate the battery from tool. Please store the tool without connecting with battery. This will affect the life time of tool and battery.
- ◆ Please do not put your hands/fingers in the working area while operating, cleaning and testing. This action is very dangerous.
- ◆ Please do not aim at anyone while operating. This action is very dangerous.
- ◆ Before crimping, the dies must be fixed tightly to the dies holder. Make sure you use correct size crimping dies before crimping.

Before cutting, if there are any broken blade pieces or any foreign object, please do not operate. Please change new spare blade.

Before punching, if there are any broken plate pieces or any foreign object causing bad-running, please do not operate. Please check if there is anything got stuck inside/between the punch head & dies. Make sure you use correct size punch dies before punching.

## HOW TO OPERATE/USE 18V BATTERY CHARGER 215527

THIS CHARGER COULD WORK WITH 18V LI-ION BATTERY: 215523 & 215525

SPECIFICATION	
MODEL NO.	215527
INPUT VOLTAGE	100 – 240 V AC
FREQUENCY	50 / 60 Hz
OUTPUT VOLTAGE	21 V DC
OUTPUT CURRENT	1,5 A
WEIGHT	0.126 KG
DIMENSION	92 mm(L) x 47 mm (W) x 45 mm (H)

Charger:



Connecting battery to charger:



## ABOUT THE 18V LI-ION BATTERY: 215523 & 215525

215523 (2 Ah)



SPECIFICATION	
MODEL NO.	215523
VOLTAGE	18 V DC
WEIGHT	0.35 KG
DIMENSION	114 mm(L) x 73,5 mm (W) x 67 mm (H)
CHARGING TIME	~ 30 MINUTES
CAPACITY	2 Ah

215525 (4 Ah)



SPECIFICATION	
MODEL NO.	215525
VOLTAGE	18 V DC
WEIGHT	0.58 KG
DIMENSION	114 mm(L) x 73,5 mm (W) x 67 mm (H)
CHARGING TIME	~ 60 MINUTES
CAPACITY	4 Ah

LED indicator state of charge (press the button):



*\*Please follow the manual of battery with correct instruction.*

*\*Our company does not guarantee anything due to the purpose damage or wrong use.*

Please pull the battery out of tool if the tool will not to be used for a long period time!

## MANUAL/INSTRUCTION OF BATTERY

### BEFORE OPERATION PLEASE NOTE

- ◆ Do not put the battery together with any metal. Otherwise the battery may have a short circuit.
- ◆ Do not store the battery at a wet/hot space. Put battery in a dry clean space.
- ◆ Do not give the battery to children. Keep the battery away from the children.
- ◆ The electric capacity of battery may be lost and the battery may be damaged if the battery is put in the tool or charger for a long time.
- ◆ Do not heat the battery or put the battery in the fire.
- ◆ Keep the battery away from water, no matter sea water or faucet water. Please keep the battery dry & clean.
- ◆ Do not press/take apart/throw down the battery. Do not let the battery near the water or fire. Also do not put the battery in your pocket.
- ◆ Do not destroy the housing/package/body of battery.
- ◆ Do not use old transformed battery with strange/abnormal appearance.
- ◆ The battery after use will be a little warm.
- ◆ The battery in low temperature (10 Degree or below), the battery will be deteriorated and its use time will be shorter. This is normal.
- ◆ Please follow the instruction of battery manual to charge the battery.
- ◆ Do not charge the battery directly under the sun or in a space with high temperature.
- ◆ Please use charger to charge the same brand battery.
- ◆ Do not use battery with other brand.
- ◆ Please charge the battery before storage if you will not use the battery for a long time. Please charge the battery at least once a month to ensure its life.

### HOW TO CLEAN THE BATTERY

- ◆ If the connecting points (+/-) or the cap of battery is dirty. It may cause the electric current can not go through. Therefore you will find the digital monitor will still show "Without Power" under full charged.
- ◆ Please keep the connecting points (+/-) or the cap of battery clean. Please use dry soft cloth to wipe the battery housing/cap and even the connecting points (+/-).
- ◆ Do not use cleaner or chemical cleaner to clean the battery or charger, otherwise they will be damaged.



### RECYCLE & THROW AWAY

- ◆ Make sure there is without any power inside the battery before throwing the battery away.
- ◆ Please charge the battery full at the first time use. If the battery's use time is shorter after long time use, it means you need to amend an extra new battery.
- ◆ Please stick gummed tapes on the connecting points (+/-) for fire/explosion preventing. Please follow the local rule of recycling.

### SAFETY INSTRUCTION

- This product is not to be used by persons (including children) with reduced physical, sensory or mental capabilities, or lack of experience and knowledge, unless they have been given supervision or instruction.
- Children should be supervised to ensure that they do not play with the appliance.
- Never recharging non-rechargeable batteries.
- Please follow the manual of battery with correct instruction. Our company does not guarantee anything due to the purpose damage or wrong use.

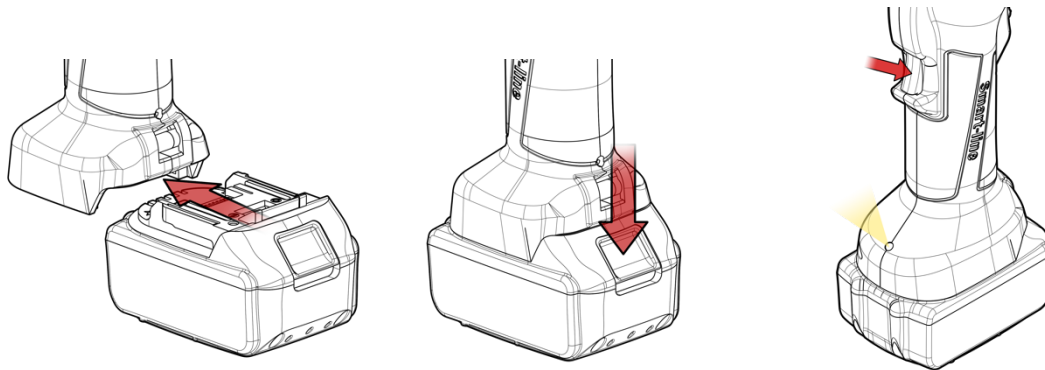


## HOW TO OPERATE/USE THE BATTERY TOOLS SET

### \*Operation Steps

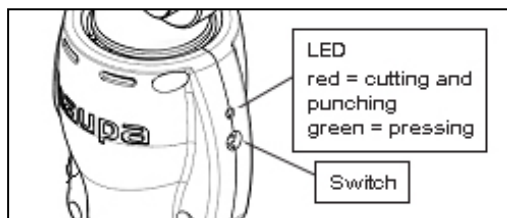
- ◆ Insert the battery to art. 216760 as below picture 1:  
*\*While the battery is inserted, the battery lock will lock the battery.*  
*\*While the tool connects the battery successfully and press the ON start button, the “LED working light” will turned on about 15-20 seconds.*

*If the acoustic signal sounds 3 times, the battery is empty.*

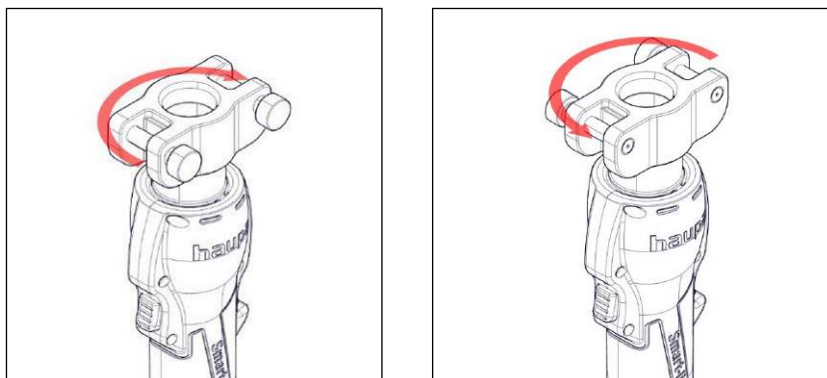


Picture 1: Set/Take battery

- ◆ Push the switch to change the function. Red means cutting and punching and green stands for pressing.



- ◆ Please kindly note that the T-Bar only could rotate 180 degrees as below picture 2:



Picture 2: T-Bar Rotation Degree

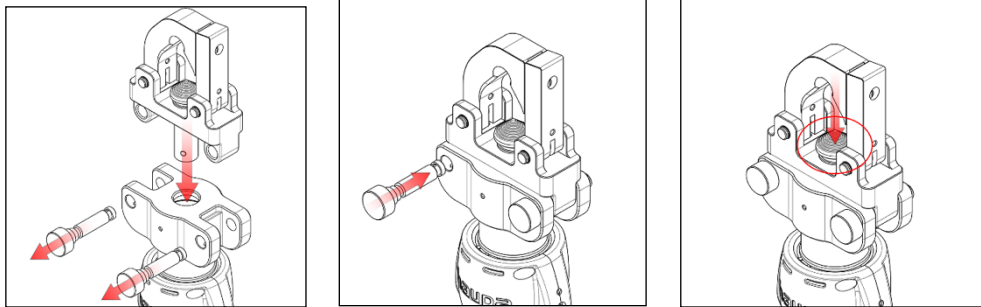


## HOW TO EXCHANGE DIFFERENT APPLICATION HEADS

- ◆ Set 216763 dieless crimping head like below steps:

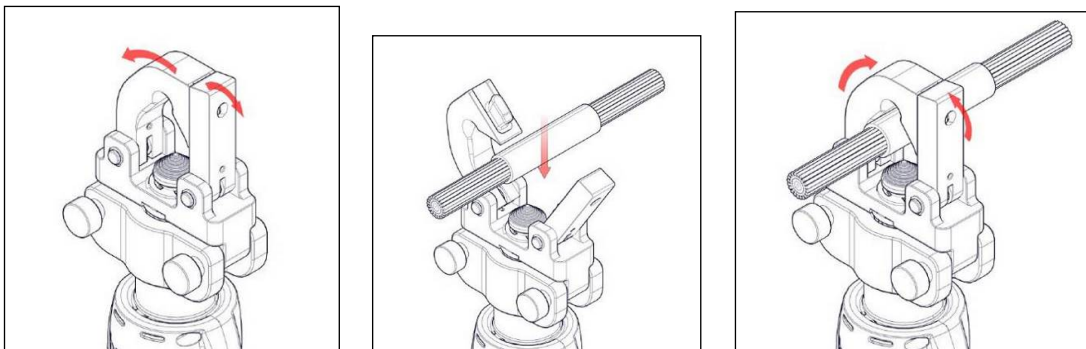
- Pull both fixed pins on T-Bar and insert art. 216763 dieless crimping head like below picture 3:

*\*After inserting head, please press oil-release button to ensure the ram back to the original position, i.e. Max. Opening, then you could put crimping material inside.*



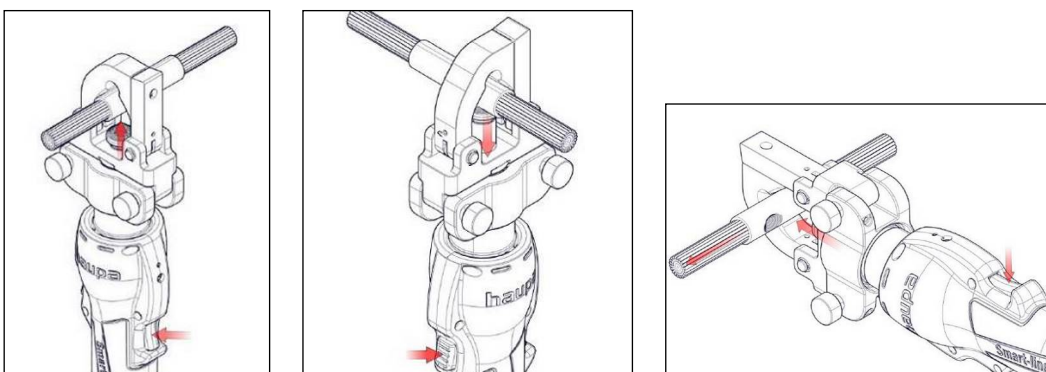
Picture 3: Insert art. 216763 dieless crimping head

- Put the crimping material inside the opening and close the jaws, make sure both fixed pins are well fixed with head, like below picture4:



Picture 4: How to set crimping material

- Press the start button to crimp the terminal and oil-release button to take the crimped terminal out of working area, like below picture5:

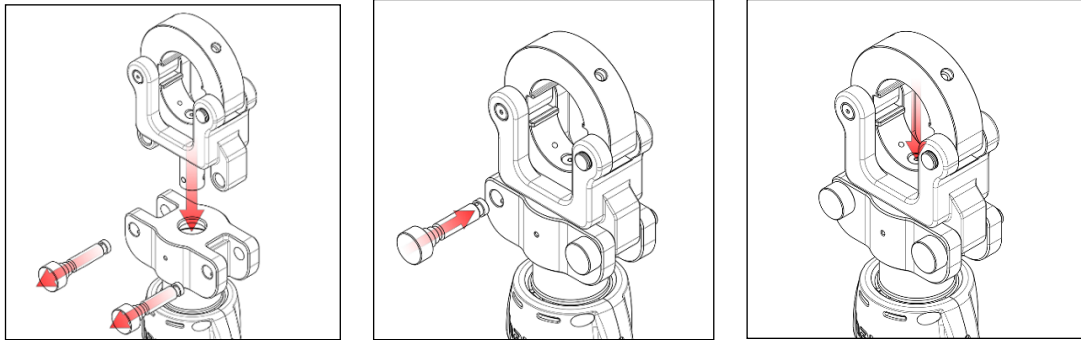


Picture 5: Crimping connector

- ◆ Set art. 216761 crimping head like below steps:

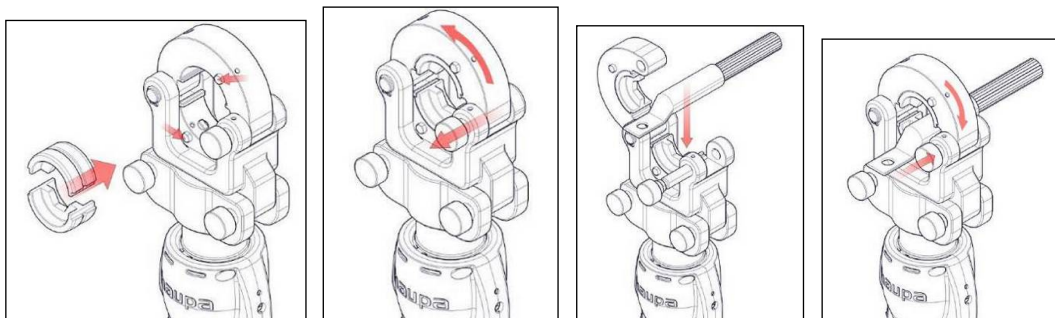
- Pull both fixed pins on T-Bar and insert art. 216761 crimping head like below picture 6:

*\*After inserting head, please press oil-release button to ensure the ram back to the original position, i.e. Max. Opening, then you could put crimping material inside.*



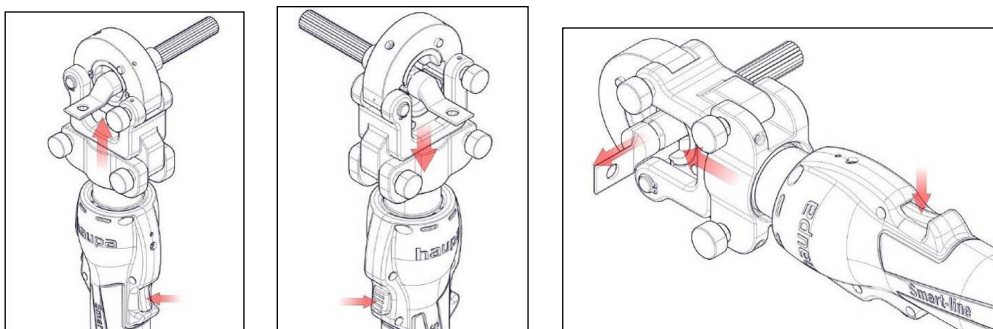
Picture 6: Insert art. 216761 crimping head

- Choose the correct size crimping dies and set it inside dies holder. Put the correct terminal meet the dies size inside, make sure both fixed pins are well fixed with head, like below picture7:



Picture 7: How to set dies & crimping material

- Press the start button to crimp the terminal and oil-release button to take the crimped terminal out of working area, like below picture8:

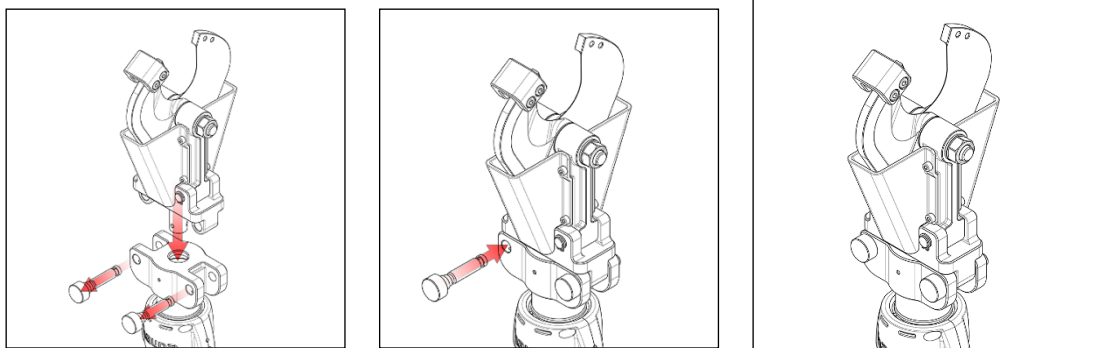


Picture 8: Crimping connector

- ◆ Set 216762 cutter head like below steps:

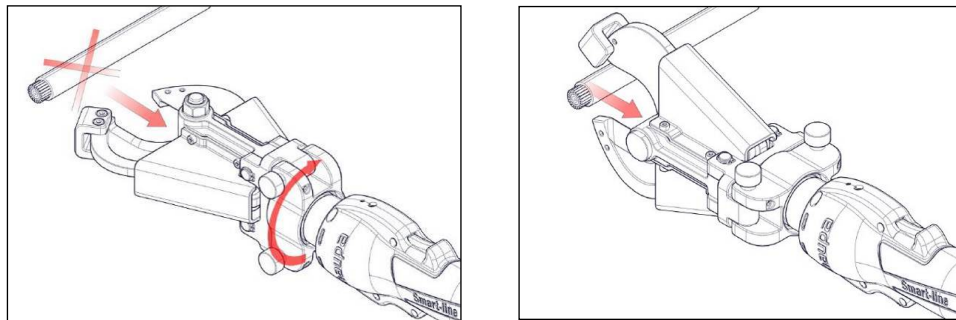
- Pull both fixed pins on T-Bar and insert art. 216762 cutter head like below picture 9:

*\*After inserting head, please press oil-release button to ensure the ram back to the original position, i.e. Max. Opening, then you could put cutting material inside.*



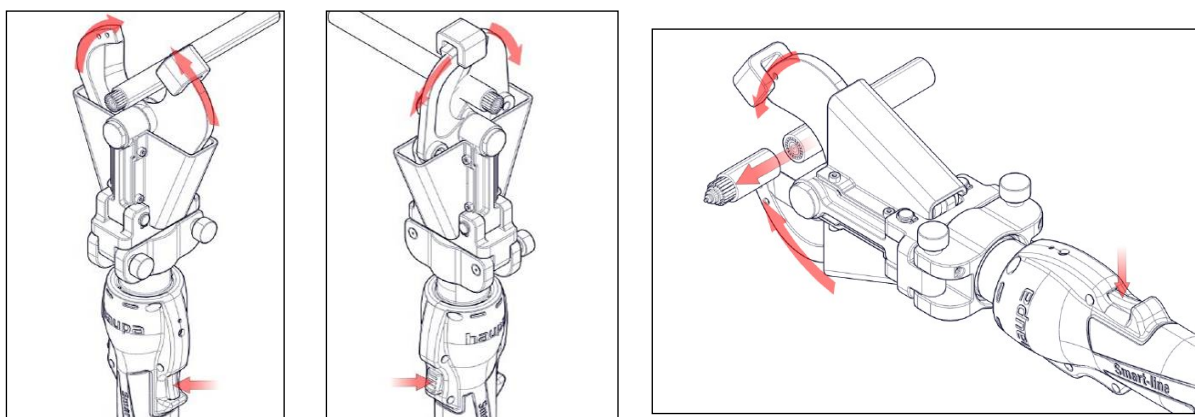
Picture 9: Insert art. 216762 cutter head

- Rotate the T-Bar to meet the direction of cable/cutting material. Put the cable/suitable cutting material inside the opening. Make sure both fixed pins are well fixed with cutter head, like below picture 10:



Picture 10: How to set cable/cutting material

- Press the start button to cut the cable and oil-release button to take the cut cable/cutting material out of working area, like below picture 11:  
*(Make sure the cable is with correct & suitable material before cutting.)*

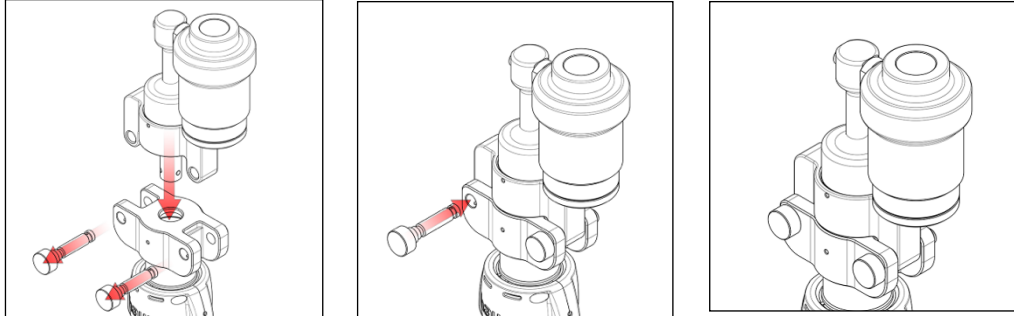


Picture 11: Cutting cable

- ◆ Set 216764 punch head like below steps:

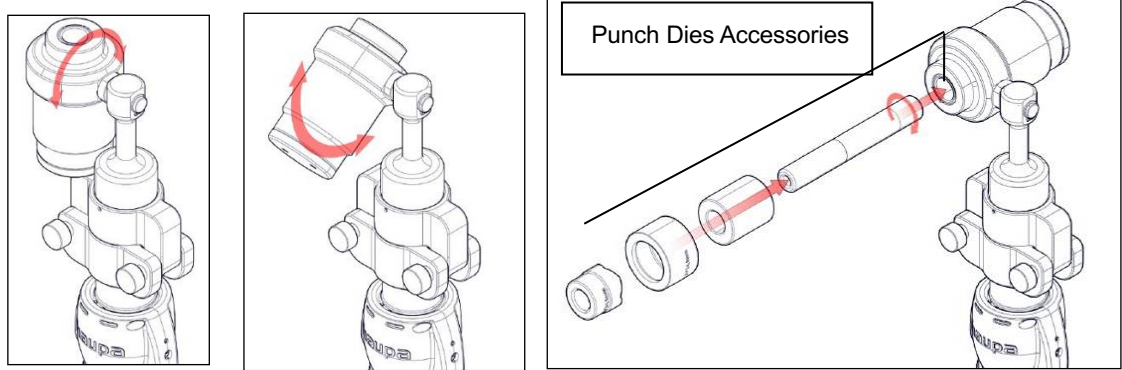
- Pull both fixed pins on T-Bar and insert art. 216764 punch head like below picture 12:

*\*After inserting head, please press oil-release button to ensure the ram back to the original position, i.e. Max. Opening, then you could put punching material inside.*



Picture 12: Insert art. 216764 punch head

- Rotate the punch head and if action is ok. Set the correct punch dies in correct method. Make sure both fixed pins are well fixed with punch head, like below picture13:

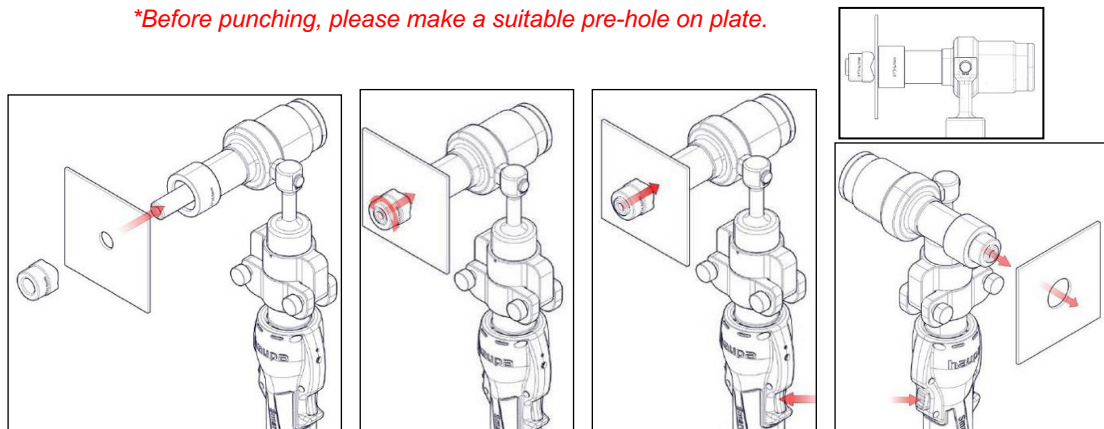


Picture 13: How to set punch dies/punching material

- Press the start button to punch the suitable plate and oil-release button to take the punched plate/punched material out of working area, like below picture14:

*\*Make sure the plate is with correct thickness & suitable material kinds before punching.*

*\*Before punching, please make a suitable pre-hole on plate.*

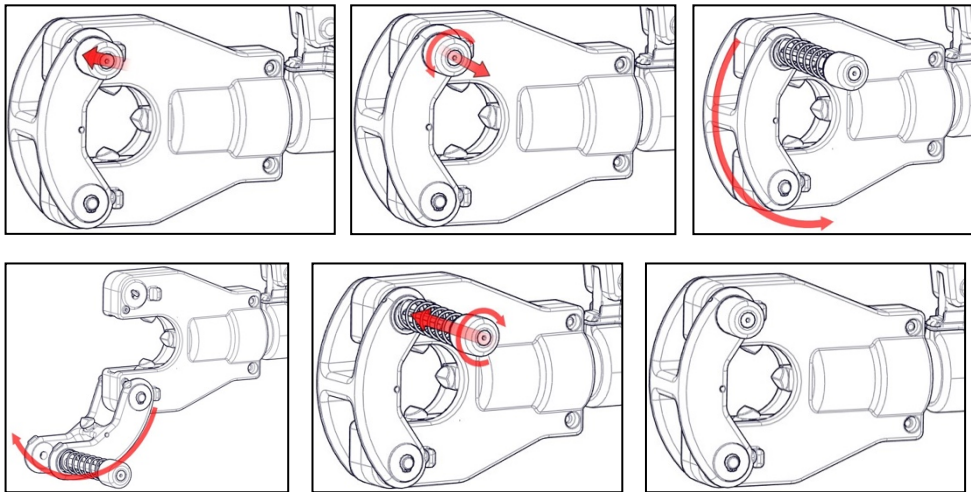


Picture 14: Punch plate



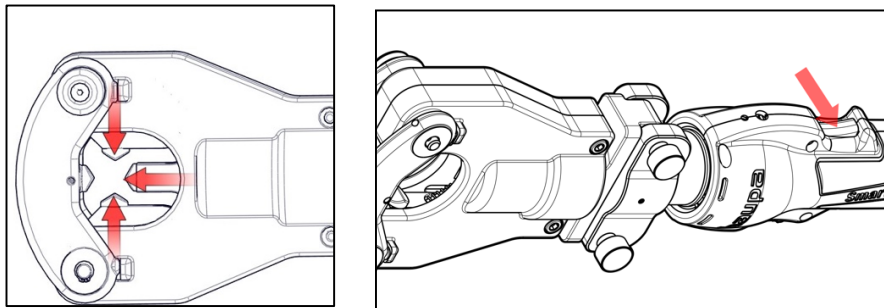
◆ Set crimping head (art. nr. 216666-U) like below steps:

- Pull both fixed pins on T-Bar and insert crimping head like below picture 15:



Picture 15: Opening & closing of crimping head

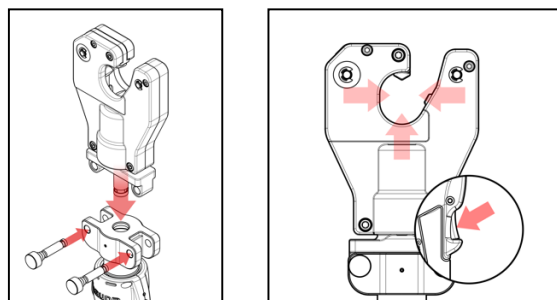
- Press fixed pin down.
- Rotate fixed pin as above pictures and pin will be out automatically.
- Pull head cap open as picture.
- Close head cap as picture.
- Press fixed pin down and rotate same as above picture.



Picture 16: Operation of crimping head

◆ Set crimping head (art. nr. 216665-U) like below steps:

- Pull both fixed pins on T-Bar and insert crimping head like below picture:
- Put proper crimping material into working area.



Picture 17: Operation of crimping head

## STORAGE

- ◆ The hydraulic oil for the body:  
Add/use hydraulic oil **Shell Tellus T15/HV 15**. Do not use other brand. Otherwise the tool will be damaged.
- ◆ Storage  
Put the tool, charger and battery in a dry clean place. Please charge the battery full once a month to make sure the life time. Clean the tool and add some antirust oil on the metal parts, i.e. dies, dies holders before storage.

## BREAKDOWN SOLVING

BREAKDOWN SITUATION	PROBLEM	METHOD TO SOLVE
NORMAL MOTOR BUT DIES NOT MOVING	OIL IS NOT ENOUGH	SEND BACK TO REPAIR
	AIR IN OIL RESERVOIR	SEND BACK TO REPAIR
	OIL RETURN IS DEFECT	SEND BACK TO REPAIR
NORMAL MOTOR BUT WITHOUT PRESSURE	O-RING IS BREAKDOWN	SEND BACK TO REPAIR
	OIL IS NOT ENOUGH	SEND BACK TO REPAIR
OPERATION VERY SLOW	DUST IN OIL RESERVOIR	SEND BACK TO REPAIR
	INNER SCREWS ARE LOOSE	SEND BACK TO REPAIR
	WRONG STEEL BALL POSITION	SEND BACK TO REPAIR
MOTOR DEFECT	BATTERY DEFECT	CHANGE BATTERY
	CONNECTION OF BATTERY AND TOOL DEFECT	CHECK ALL CONNECTION POINTS
	SWITCH BREAKDOWN	CHECK SWITCH SEND BACK TO REPAIR
OIL RETURN DEFECT	CAN NOT OPERATE	COMPLETE THE CIRCLE
	DIES BLOCKED	CLEAN THE BLOCK
	OIL RETURN BREAKDOWN	SEND BACK TO REPAIR

- IF YOU MEET ANY BREAKDOWN THAT YOU CAN NOT HANDLE, PLEASE CONTACT US WITHOUT ANY HESITATION.
- DO NOT TRY TO SLOVE THE BREAKDOWN WITHOUT ANY PROTECT EQUIPMENT.



## Declaration of Conformity HAUPA Factory Certificate

Remscheid, 24.02.2021

Product:	Battery Hydraulic Crimping Tool „US-6M“	
Product Range:	Around the cable	
Art.-Nr.:	216760-1	
Application:	universal	
Force:	60 kN	
Pressure:	700 Bar	
Battery:	18 V, 2 Ah Li-Ion	
Weight (Set):	6,7 kg	
Optional accessories:	Crimping head „U-KO-6“	Art. 216761
	Crimping head „U-KDE240-6“	Art. 216763
	Cutting head „U-KS6-S50“	Art. 216762
	Punching head „U-S-6“	Art. 216764
	Crimping head „U-D300-6“	Art. 216665-U
	Crimping head „U-D400-6“	Art. 216666-U
Additional remarks:	Includes a sensor (to display that a crimp has been completed according to standards), Universal hydraulic tool with exchangeable heads for multiple applications (Crimping-Cutting)	

We, HAUPA GmbH & Co KG, Headquatered in 42853 Remscheid/Germany, Koenigstrasse 165-169, declare under our sole responsibility that the products mentioned in the data sheet comply with the European Standards or Standard Documentations according to the regulations of the following mentioned directives:

EN 62841-1, EN 12100 Teil 1 + 2, EN ISO 13857 , EN 349, EN 60204-1, EN 20643, EN 61000-6-3, EN 61000-6-2, EN 60529, EN 4413, EN 1037

According to 2006/42/EG  
And the EMV-Guideline 2014/30/EU



HAUPA GmbH & Co.KG  
Product Management